

SIMRAD®

2024

MARINE ELECTRONICS FOR
POWERBOATS AND SPORTFISHING.



TABLE OF CONTENTS

03	Meet Simrad Yachting
05	The Integrated World of Simrad®
06-07	Glass Bridge Navigation
08-14	Multifunction Displays
15	Navigation Displays
16-19	HALO® Radar
20-21	Radar Displays and Dedicated Displays
22-25	Autopilots & Instruments
26-31	Sonar & Transducers
32-33	Marine Communications
34-35	Charts & Mapping
36-39	Powerboat and Sportfishing Systems
40	Integrated Vessel
41	Smartphone Integration
42-43	Part Numbers

MEET SIMRAD YACHTING

Most boaters settle for marine technology that supports them every weekend on the water, nothing more.

But Simrad® isn't for 'most boaters'.

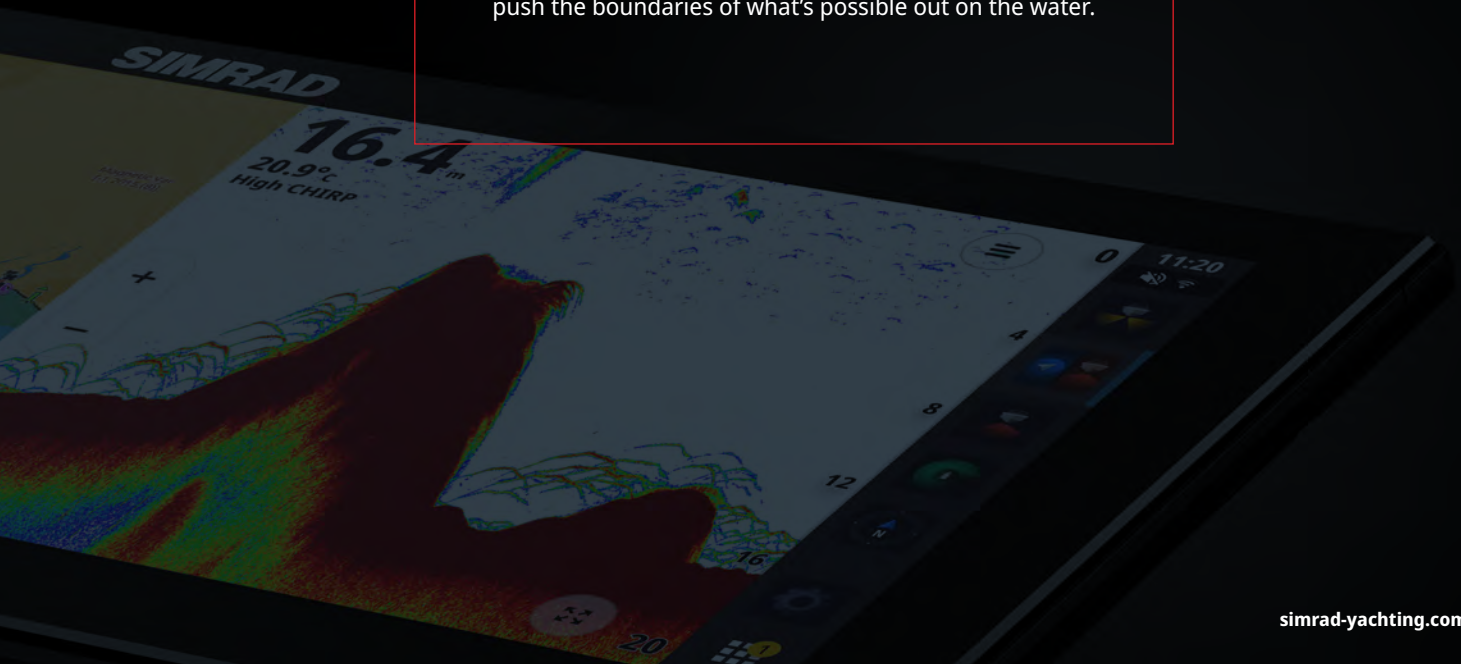
Simrad® is built for those who Never Settle.

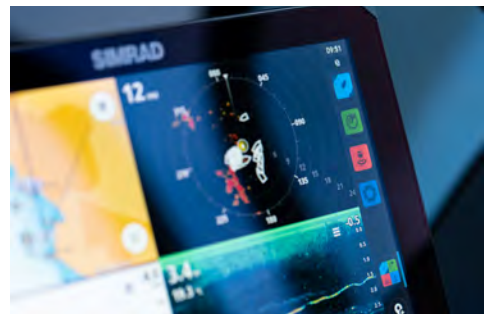
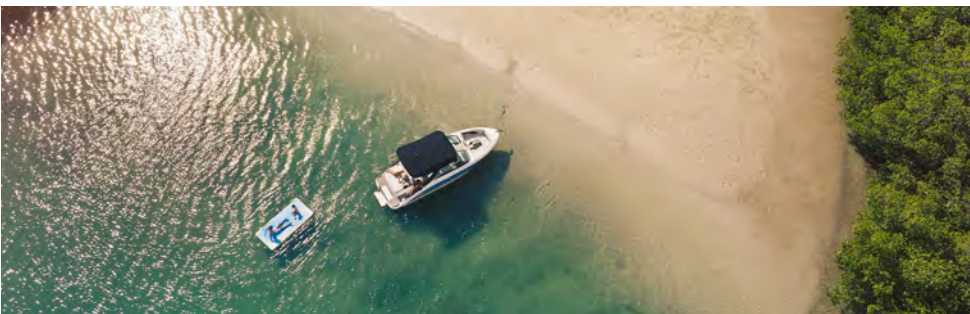
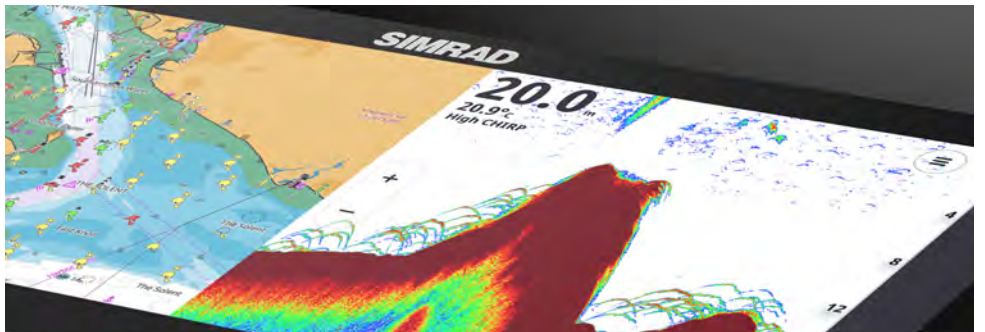
Simrad®'s award-winning products have been setting the standard in marine electronics since 1946. With a wide-reaching product line, we're able to build complete, integrated systems that deliver excellence from bow-to-stern.

Our state-of-the-art displays feature on the world's most desirable superyachts. Our award-winning radars and transducers support the world's foremost anglers.

And our revolutionary software promises ease-of-use to dayboats and newcomers.

The one thing that unites all who use Simrad® marine electronics? A commitment to excellence and a desire to push the boundaries of what's possible out on the water.





THE INTEGRATED WORLD OF SIMRAD®

We live in an integrated world.

From our homes to our cars and boats, we're surrounded by technology designed to help us achieve more, with greater ease and greater safety.

Our integrated vessel concept brings together all your on-board technology, behind a single, intuitive interface. Monitor and control every aspect of your on-the-water experience from a variety of customizable Simrad® multifunction displays.

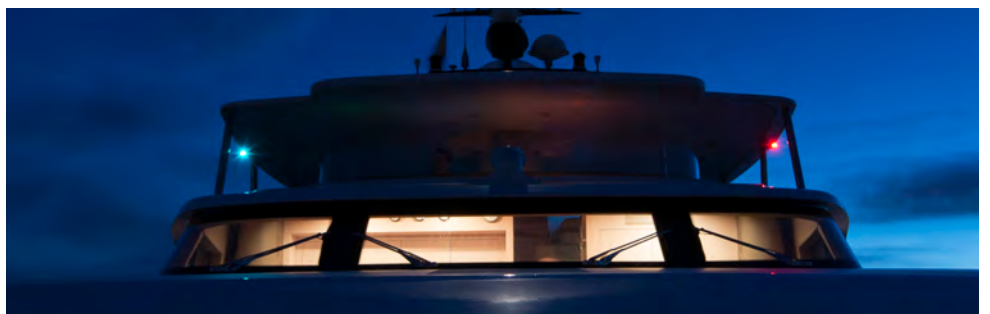
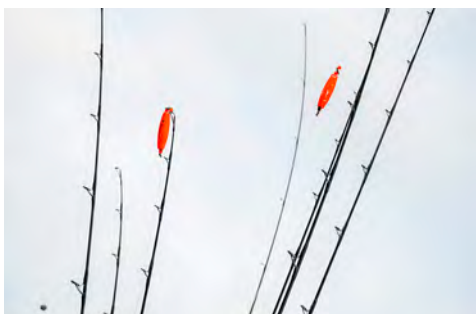
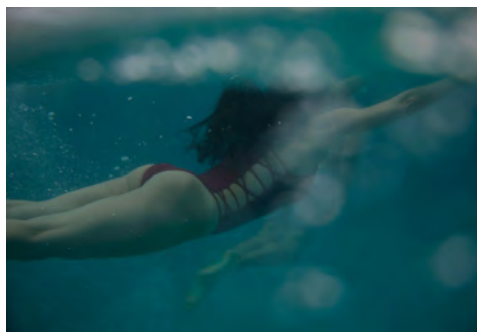
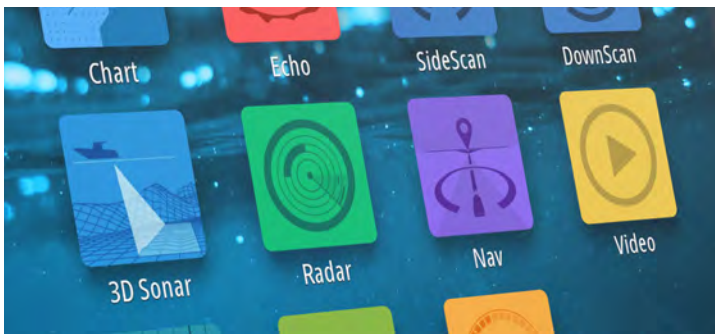


Compare our Chartplotters & Fishfinders

Follow the QR code to see full comparison chart.

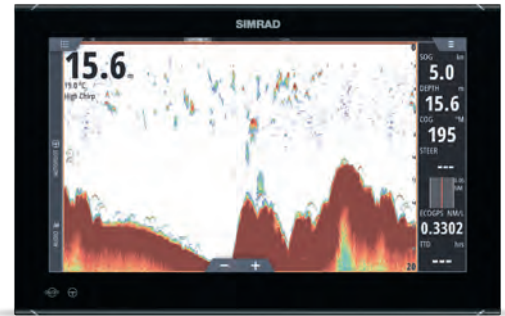


GLASS BRIDGE NAVIGATION





24"



19"



16"

SUMMARY

NSOevo3S represents the pinnacle of marine displays, combining a high-performance processor with sleek, cutting-edge design. With our largest display models, NSOevo3S removes the need for compromise, bringing you the ultimate navigation machine to sit at the control center of the ultimate vessel.

Supreme performance

NSOevo3S features an iMX 8 integrated six-core processor that delivers category leading response times, and double the CPU performance. The result? Our smoothest ever screen transitions, letting you switch instantly between helm layouts.

See things differently

With ultra-bright 16-, 19- or 24-inch widescreen sizes, NSOevo3S lets you see your boat differently. Wide viewing angles keep the screen in view from anywhere in sight, even if you're wearing polarized sunglasses. And the large, full HD display lets you combine up to six panels in a split-screen layout.

Full connectivity

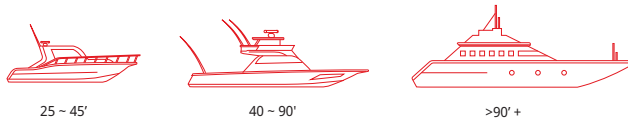
With all that power and display space, it's no surprise NSOevo3S is an unrivalled control center. Built-in wireless connectivity links NSOevo3S to your existing mobile devices for remote viewing and control, and delivers easy online software upgrades via any wireless internet hotspot.

Wired Ethernet, NMEA 2000®, and J1939 networking provide almost limitless integration options, from vessel-wide display systems to radar, sonar, and integration with an extensive range of third party technologies.

Performance charting

In addition to the embedded C-MAP US Coastal Charts, NSOevo3S is designed to work fluidly with C-MAP® REVEAL™ and DISCOVER™, harnessing an array of powerful mapping features such as Full-Featured Vector Charts, Satellite Overlay, and High-Res Shaded Relief.

BEST SUITED TO:



KEY FEATURES

- Intuitive touchscreen control.
- Integration with wide range of third-party technologies, inc. CZone®, OmniSense, Dometic, Lumishore and more.
- Built-in GPS receiver and wireless connectivity.
- Seamless integration with full Simrad® suite, inc. full HALO® radar support.
- Embedded C-MAP US Coastal Charts inc. Florida & Bahamas.
- Upgrade to C-MAP DISCOVER & REVEAL.
- Support for additional charting, such as CMOR, Florida Marine Tracks, Strike Lines and Standard Mapping.

- iMX 8 Integrated six-core processor for superior performance.
- Ultra-sharp, full HD display.
- Low-profile glass helm styling.
- Superior visibility with six-panel split screen option.
- 2-year Limited Warranty.
- Simrad® App integration.
- Wireless connectivity, plus full Ethernet, USB, and NMEA 2000® networking capability.

NSSEVO3S™

Designed for all-out speed and performance, NSSevo3S is our all-in-one premium chartplotter.

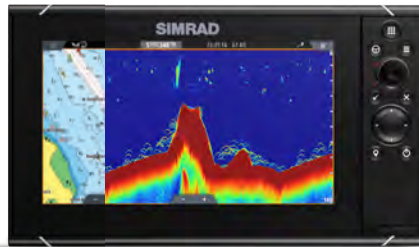
The built-in high performance echosounder makes it an ideal choice for sportfishing enthusiasts, while the rotary dial and keypad promise control in all conditions.



16"



12"



9"

SUMMARY

2x faster processing

When it comes to powerboats, we know that speed is everything. That's why we've packed NSSevo3S with our latest iMX 8 processor, promising 2x faster processing speeds when rendering graphics and switching between different screens.

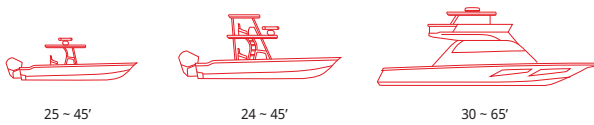
Exceptional sonar performance

NSSevo3S is a perfect fit for fishing fans. The display boasts exceptional bottom-tracking and fish-finding capabilities, thanks to the built-in high-performance echosounder, featuring dual-channel 1kW CHIRP-enabled sonar.

Performance charting

In addition to the embedded C-MAP® US Coastal Charts, NSSevo3S is designed to work fluidly with C-MAP REVEAL™ and DISCOVER™, harnessing an array of powerful mapping features such as Full-Featured Vector Charts, Satellite Overlay, and High-Res Shaded Relief.

BEST SUITED TO:

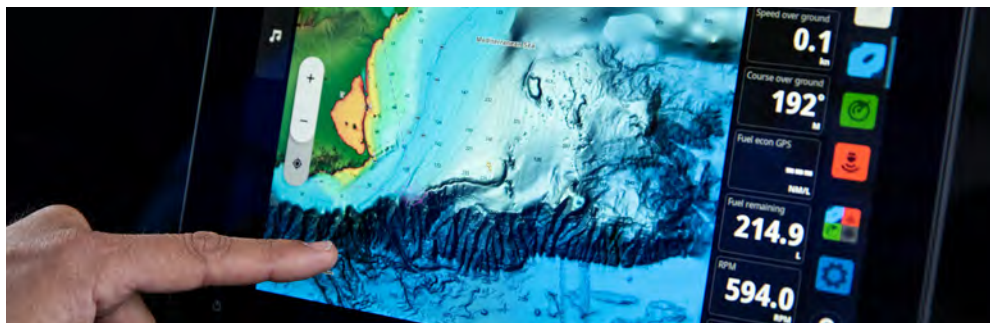
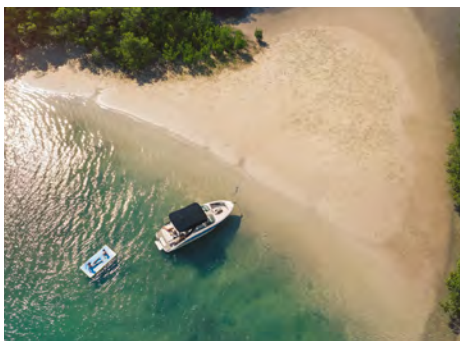
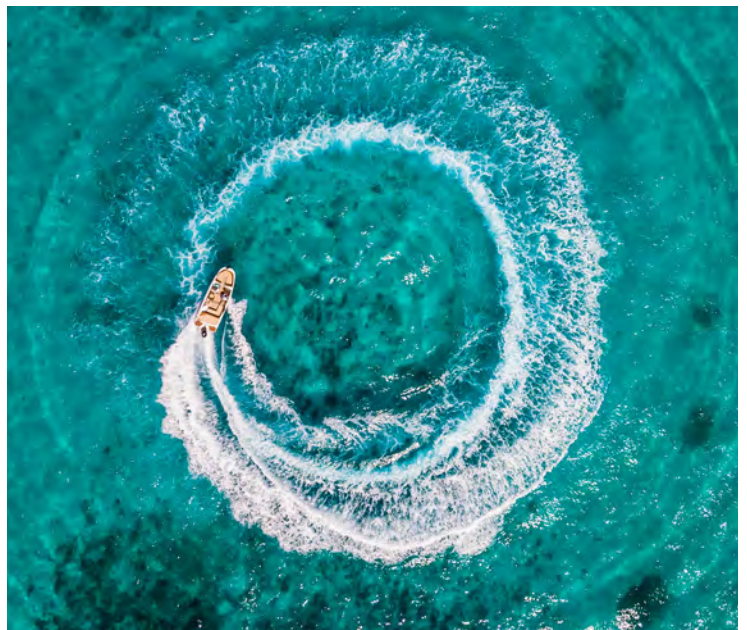


KEY FEATURES

- Intuitive touchscreen control.
- Integration with wide range of third party technologies, inc. CZone®, OmniSense, Dometic, Lumishore and more...
- Built-in GPS receiver and wireless connectivity.
- Seamless integration with full Simrad® suite, inc. full HALO® radar support.
- Embedded C-MAP US Coastal Charts inc. Florida & Bahamas.
- Upgrade to C-MAP DISCOVER & REVEAL.
- Support for additional charting, such as CMOR, Florida Marine Tracks, Strike Lines and Standard Mapping.
- Simrad® App integration.
- Wireless connectivity, plus full Ethernet, USB, and NMEA 2000® networking capability.
- 2-year Limited Warranty.

- iMX 8 Integrated six-core processor for superior performance.
- Rotary dial and keypad for additional precision.
- SolarMAX™ IPS display with ultra-wide viewing angles; viewable through Polarized sunglasses.
- Built in high-performance sonar with dual-channel 1kW CHIRP.
- TripIntel™ trip planning and support for automatic routing.
- Mercury® VesselView® and Smart Tow® enabled for wake shaping.
- Plan Position Indicator (PPI) and AIS enhanced interface capabilities.
- Choose low-profile flush mounting or convenient bracket mounting.
- Supports SteadySteer™, an autopilot performance enhancement for NAC™-2 and NAC™-3 autopilot computers fitted with RPU.

MULTIFUNCTION DISPLAYS

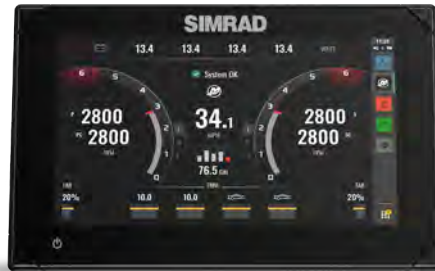




12"



9"



7"

SUMMARY

NSX delivers a simpler, more fluid boating experience for mid-sized center consoles and dayboats. Our latest operating system introduces redesigned charts, our fastest-ever auto-routing, and seamless integration for total control of your boat. Crafted specifically for ease of use, with NSX you'll spend less time on the screen, and more time on your next adventure.

Game-changing ease of use

Our latest OS is smoother, faster, and easier to use than ever before. Designed to feel immediately familiar, NSX introduces an activities bar to the touchscreen, allowing you to pin your favorite apps and switch between them with a single touch.

Next-level integration

With NSX, you're better connected than ever. The ability to pair with more tools, more easily, opens up a world of possibilities on the water. Manage your engines with a dedicated Mercury® app, have the confidence to travel further with our latest HALO® radars, or boost your fishing ability with sonar sharing, providing access to more views than ever before.

Our fastest-ever auto-routing

When we said NSX was designed to be quick, we meant it. NSX introduces our fastest-ever auto-routing, calculating routes three times faster than our previous chartplotters.

Redesigned charting experience

The latest C-MAP® DISCOVER™ X and REVEAL™ X charts have been completely redesigned to bring greater detail at all zoom levels with 1-foot contour lines, and enhanced day and night modes to help you navigate around the clock. And with custom depth shading and high-resolution bathymetry, you won't miss a thing under the surface.

The charts also unlock revolutionary C-MAP Safety Alerts – built to automatically alert you to hazards up ahead, from shallow waters to buoys. And – in an industry first – the X-Chart Manager lets you manage C-MAP chart updates and upgrades directly from your device, with the ability to choose custom areas for a near-instant download.

BEST SUITED TO:



17 - 22'

19 - 25'

24 - 37'

KEY FEATURES

- Intuitive touchscreen control.
- Integration with wide range of third party technologies, inc. CZone®, OmniSense, Dometic, Lumishore and more...
- Built-in GPS receiver and wireless connectivity.
- Seamless integration with full Simrad® suite, inc. full HALO® radar support.
- Simrad® App integration .
- Wireless connectivity, plus full Ethernet, USB, and NMEA 2000® networking capability.
- 2-year Limited Warranty.
- Setup Wizard to get you up and running quickly.

- Sonar sharing between NSX devices.
- Full Mercury Integration, inc SmartCraft® Connect.
- SolarMAX™ IPS screen with extreme viewing angles.
- Compatible with Active Imaging™, featuring CHIRP, SideScan, and DownScan Imaging™, as well as the S5100 sonar module.
- Compatible with wide range of 1kW transducers.
- Bundled with C-MAP DISCOVER X for North America & Canada, complete with 12 months Premium Access to the Simrad App.
- Upgrade to C-MAP REVEAL X charts.
- Support for additional charting, such as CMOR, Florida Marine Tracks®, Strike Lines® and Standard Mapping®. *Coming in 2024.

NSX® ULTRAWIDE

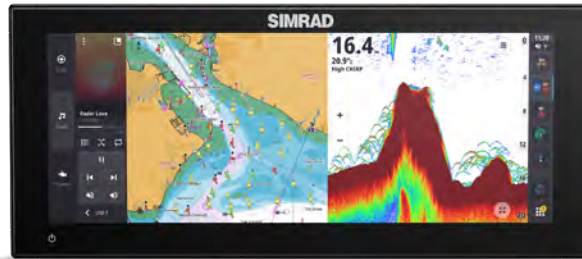
Expand your horizons with our first ever ultrawide display. NSX® ULTRAWIDE brings all the benefits of dual screens to a single display for our most immersive experience yet.

Get a truly unique, eye-catching dash, see apps as they were meant to be seen, and experience C-MAP's X-Gen charts in more detail than ever.

Welcome to the future of marine displays. Why settle for anything less?



15"



12"

SUMMARY

Expand your horizons

NSX ULTRAWIDE delivers all the benefits of dual screens on a single display, for a more streamlined, more immersive experience. For the first time, see apps as they were meant to be seen – with better-optimized splits and uninterrupted data flows that are easier to digest.

Show-stopping dashboards

There's nothing else like NSX ULTRAWIDE - creating eye-catching, low-profile dashboards that stand out instantly. The unique ultrawide display is built to be simpler, cleaner, and more elegant than anything else in the marina.

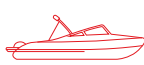
The cutting-edge aspect ratio is also the perfect place to explore our latest operating system. A simplified presentation delivers game-changing ease of use, with streamlined menus and fully customizable panels.

The ultimate charting experience

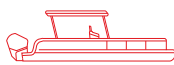
With high pixel density on NSX ULTRAWIDE, your charts never looked so good. NSX ULTRAWIDE is optimized for use with C-MAP's latest X-Gen charts. Bundled with DISCOVER X charts for North America, or the option to unlock a real fishing superpower with a discounted upgrade to REVEAL™ X, adding stunning shaded relief and satellite imagery to your arsenal.

The charts also unlock revolutionary C-MAP Safety Alerts – built to automatically alert you to hazards up ahead, from shallow waters to buoys. And – in an industry first – the X-Chart Manager lets you manage C-MAP chart updates and upgrades directly from your device, with the ability to choose custom areas for a near-instant download.

BEST SUITED TO:



20 ~ 30'



18 ~ 30'



19 ~ 25'

KEY FEATURES

- Intuitive touchscreen control
- Integration with wide range of third party technologies, inc. CZone®, OmniSense, Dometic, Lumishore and more...
- Built-in GPS receiver and wireless connectivity.
- Seamless integration with full Simrad® suite, inc. full HALO® radar support.
- Simrad® App integration.
- Wireless connectivity, plus full Ethernet, USB, and NMEA 2000® networking capability.
- 2-year Limited Warranty.
- Setup Wizard to get you up and running quickly.

- Sonar sharing between NSX devices.
- Full Mercury Integration, inc SmartCraft® Connect.
- Integration with leading propulsion brands such as Honda and Suzuki.
- Ultrawide SolarMAX™ IPS screen with extreme viewing angles.
- Compatible with Active Imaging™, featuring CHIRP, SideScan, and DownScan Imaging™, as well as the S5100 sonar module.
- Compatible with wide range of 1kW transducers.
- Bundled with C-MAP DISCOVER X for North America & Canada, complete with 12 months Premium Access to the Simrad App.
- Upgrade to C-MAP REVEAL X charts.
- Support for additional charting, such as CMOR, Florida Marine Tracks®, Strike Lines® and Standard Mapping®. *Coming in 2024.

MULTIFUNCTION DISPLAYS

GO™ SERIES



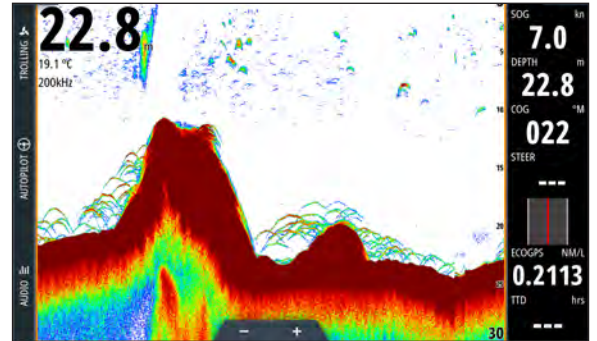
GO9 SERIES



GO7 SERIES



Chart



Sonar

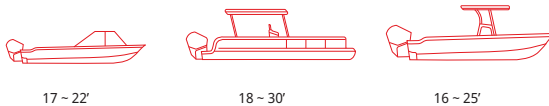
SUMMARY

This super-bright chartplotter brings navigation, full radar support and built-in sonar to any sportboat, cruiser or small center console. Simrad® GO comes with built-in sonar capability, unlocking ForwardScan®, Broadband Sounder™, CHIRP Sonar and Active Imaging™.

Get plug-and-play connectivity with the full range of Simrad® HALO® radars.

And a multi-touch display makes it easy to explore charts, zooming in to see incredible detail of ports and waterways anywhere in the world.

BEST SUITED TO:



17 ~ 22'

18 ~ 30'

16 ~ 25'

KEY FEATURES

- Intuitive touchscreen control.
- Integration with wide range of third-party technologies, inc. CZone®, Mercury® Smart Tow®, Honda ECO mode, lighting, and more.
- Built-in high-speed 10Hz GPS receiver and wireless connectivity.
- Seamless integration with full Simrad® radars (excludes GO 5).
- Simrad® App integration.
- Bundled with C-MAP DISCOVER North America.
- Upgrade to C-MAP REVEAL.
- Support for wide variety of charting options, such as CMOR, Florida Marine Tracks, Strike Lines and Standard Mapping.

- Wireless and NMEA 2000® networking capability.
- TripIntel™ trip planning and support for automatic routing.
- Flush or bracket mount.
- Built-in Broadband Sounder, with support for CHIRP Sonar, Active Imaging and ForwardScan (transducer required).
- Dual MicroSD slots (GO 9 only).
- 2-year Limited Warranty.

NAVIGATION DISPLAYS

CRUISE™ RANGE



9"



7"



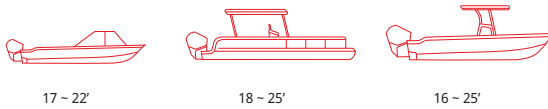
5"

SUMMARY

Simrad® Cruise™ is our most straightforward chartplotter. Everything you need for simple navigation is right inside the box, including a display, mounting bracket, and sonar transducer.

Cruise can display charts, navigation and sonar in split-screen view, or separately in full screen. A rotary dial and keypad controls make it easy to navigate menus, create routes and access vital data for speed, depth, battery readings and more.

BEST SUITED TO:



KEY FEATURES

- Rotary dial and keypad for precision control.
- Built-in GPS receiver.
- TripIntel™ trip planning and support for automatic routing.
- Bracket or panel mount.
- 2-year Limited Warranty.
- Embedded C-MAP US Coastal Basemap.
- Upgrade to C-MAP DISCOVER.

- Support for other third-party mapping partners including Navionics®.
- Pre-selected split-screens for ease of use.
- CHIRP sonar with automatic depth tracking.

HALO® RADARS

Our award-winning HALO radar range delivers industry-leading 360-degree sweeps to provide superior

situational awareness to the helm. Our dome and open array radars offer impressive range, precise target definition, and class-leading ease-of-use.

Award Winning Technology

2023 Best
Elex Award

Boating Industry
Top Products 2023

Miami 2023
Innovation award

Compare our Halo Radars
Follow the QR code to see full comparison chart.



**HALO® 2000 AND 3000
OPEN ARRAY RADAR**



HALO 2003 - 3ft long



HALO 2004 - 4ft long



HALO 2006 - 6ft long



HALO 3004 - 4ft long



HALO 3006 - 6ft long

SUMMARY

From the people who brought you the world's first recreational Pulse Compression radars, now comes the HALO 2000 and 3000 series – our most powerful radars yet.

The 2000 and 3000 really step it up in terms of power, offering 2x and 5x the respective wattage of our previous models. This translates to a vastly improved range and best-ever levels of clarity both near and far.

And the intelligent Preset Modes make operating HALO open array radars easier than ever, giving near-instant access to superior situational awareness in any setting.

Whether you're navigating busy waterways or venturing offshore for fish, this is the pinnacle of radar technology.

KEY FEATURES

ZoneTrack™

Automatically detects and tracks radar targets in a designated area.

Preset Modes

Harbor, Offshore, Weather and Bird modes quickly optimize settings for specific situations.

VelocityTrack™

Instantly identifies and automatically checks every radar target detected using Doppler technology.

Dangerous Target Alert

Alerts the operator to the range, bearing and heading of other vessels relative to your boat.

Watch Target

Allows the manual selection of specific radar targets that are then tracked on the radar PPI.

Target Tracking

Simultaneous short, mid- and long-range detection of multiple objects with tracking history.

Always Ready

Unlike traditional Magnetron radars, HALO's full power is ready when you are. HALO 2000 and 3000 are ready instantly from standby mode, and just seconds from a cold start. That's the benefit of solid state, pulse compression technology.

Superior Range

HALO open array radars provide superior range for those who venture further on their vessels. Spot targets from as far away as 72NM on HALO 2000, and 96NM on HALO 3000.

Powerful Bird Mode

Both HALO 2000 and 3000 feature Bird modes that allow sportfishing enthusiasts to locate flocks of birds at distance, leading you to the richest fishing holes in your area. The powerful Bird+ Mode on HALO 3000 finds flocks as far as 8NM away.

Beam Sharpening with Target Separation Control.

Simultaneous short, mid-, and long-range operation.

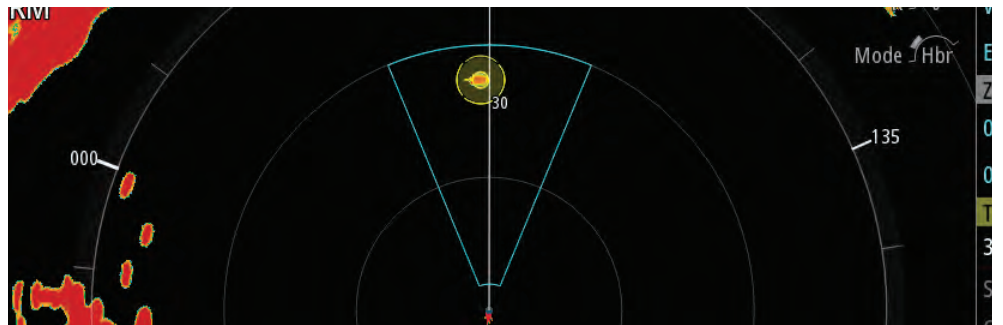
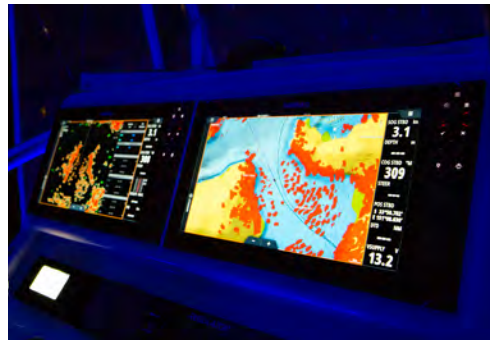
High-speed 48RPM operation.

MARPA target tracking, up to 10 targets (20 with dual range).

Low electromagnetic emissions and radiation.

Low power consumption with 12/24V operation.

ZoneTrack™ detects and tracks targets in a designated area.



**HALO® DOME
RADAR**



HALO20



HALO20+



HALO24

SUMMARY

HALO Dome

Our revolutionary HALO pulse compression dome radars deliver superior situational awareness in a compact case.

HALO20

HALO 20 is a cost-effective solution, capable of detecting hazards and other targets up to 24 nautical miles away. HALO 20 tracks up to 10 targets simultaneously using MARPA target tracking. Its small footprint makes it an ideal choice for smaller sportfishing vessels and dayboats.

HALO20+

HALO 20+ delivers an almost real-time view, with industry-leading 60RPM operation at close range for the ultimate collision avoidance. Find fishing spots with Bird Mode and identify hazards in an instant with VelocityTrack™. Dual Range operation lets you benefit from simultaneous short and long-range coverage, up to a 36NM range.

HALO24

HALO 24 dome radars feature an industry-leading 60RPM operation, for the ultimate in collision avoidance of stationary and fast-moving targets.

The radar's high quality short-, med- and long-range detection is available instantly from low power standby mode.

KEY FEATURES

HALO20

10W Pulse Compression.
24NM range.
Harbor, Offshore and Weather Modes.
MARPA target tracking.
InstantOn™.
Low Power Consumption.
Guard Zones.

HALO20+

36NM range.
Advanced Pulse Compression technology with Beam Sharpening.
Simultaneous Dual Range operation.
Ultra-fast 60RPM operation up to 1.5NM.
VelocityTrack™ Doppler technology.
Harbor, Offshore, Weather and Bird Modes.
MARPA target tracking (10 targets, 20 in Dual Range).
ZoneTrack™.
Watch Target.

HALO24+

48NM range.
Advanced Pulse Compression technology with Beam Sharpening.
Simultaneous Dual Range operation.
Ultra-fast 60RPM operation up to 1.5NM.
VelocityTrack™ Doppler technology.
Harbor, Offshore, Weather and Bird Modes.
MARPA target tracking (10 targets, 20 in Dual Range).
Ready instantly from standby.

A man in a white shirt and cap is steering a boat. In the foreground, a Simrad radar display is visible. The background is a dark, overcast sky.

RADAR DISPLAYS AND DEDICATED DISPLAYS

The Simrad® R2009 and R3016 are dedicated radar control units, compatible with all our radar systems.

R2009 AND R3016



R2009



R3016

SUMMARY

R2009 Dedicated Radar Control Unit

The R2009 features an integrated 9-inch portrait display and controls.

R3016 Dedicated Radar Control Unit

The R3016 has a 16-inch widescreen HD display.

FEATURES

Automatic tuning system.
Anti-sea-clutter technology for optimum picture in adverse conditions.
MARPA target tracking.
Keypad and rotary dial.

HDMI output (*R3016 only*).
Bracket and flush mount options.
Ethernet, NMEA 0183 and NMEA 2000®.

S2009 AND R3016



S2009



S2016

SUMMARY

S2009 Dedicated Sonar Control Unit

The S2009 fishfinder combines a single-channel 1kW Broadband Sounder™ module with CHIRP technology, 9-inch portrait display for maximum vertical detail, and intuitive keypad-driven operation. Robust yet compact with both bracket and flush-mount installation options, the S2009 was designed to meet the need for a dedicated fish finder display aboard coastal and offshore fishing vessels.

S2016 Dedicated Sonar Control Unit

The S2016 combines 1kW CHIRP-enabled sonar with a 16-inch widescreen display for an extensive on-screen history, and intuitive keypad-driven operation for reliable control in all conditions. This dedicated sonar integrates seamlessly with other Simrad® displays, while offering charter captains and long-range sportfishing vessels the reliability of a self-contained sonar platform.

KEY FEATURES

Dedicated fish finder with integrated Broadband Sounder™ module and CHIRP 1kW technology.
High depth penetration and ping speed.
9-inch portrait or 16-inch widescreen display.
High brightness ideal for outside installation.

See clearly with White Line, White Marker and Color Erase features.
Simple operation with 8 direct-access menu keys.
Bracket and flush mounting options (*bracket included*).
and Ethernet, NMEA 0183® & NMEA 2000® connectivity.

AUTOPILOTS

Autopilot systems provide accurate and reliable control over your heading without years of experience at the helm.

Complete autopilot systems bring together a number of components, providing a solution that's right for your vessel.

AUTOPILOTS

AUTOPILOTS



SteadySteer™



NAC™ -D

SUMMARY

SteadySteer

SteadySteer enables immediate, manual control of a vessel through turns, without disengaging the autopilot.

NAC -D

NAC -D is a steer-by-wire autopilot solution for Electronic Vessel Control Systems (steering systems with a digital interface). NAC -D comes with Continuum® steering and the SteadySteer feature.

KEY FEATURES

SteadySteer Main Features

- Seamless, intuitive boat control.
- Easy course changes, direct from the helm.
- Simple operation with automatic override and re-engagement.
- Performance upgrade for existing systems.

NAC -D Main Features

- SeaStar Solutions®, Volvo®, Yanmar®, and Yamaha® approved control system interface.
- Control via AP44, AP48, or integrate with your Simrad® display.
- No need for additional hydraulic pump, rudder sensor, or dockside calibration.
- Includes SteadySteer.
- Included Continuum®.
- Full integration with Simrad® NSX, NSS and NSO displays.



AP™48 Autopilot



AP™44 Autopilot



DrivePILOT™



Outboard Pilot

SUMMARY

AP44 AUTOPILOT

Get accurate and reliable control over your heading without years of experience at the helm. This feature-packed autopilot controller includes a 4.1" full-color display, intuitive operation, and rotary dial course adjustment.

AP48 AUTOPILOT

The AP48 autopilot controller is a premium, dedicated control head for Simrad® autopilot systems, featuring enhanced, modern glass-bridge styling.

DrivePILOT™ / Outboard Pilot

Do-It-Yourself autopilot packs for fingertip control from any Simrad® GO, NSX, NSS or NSO display. Affordable automatic steering for hydraulic-steer and cable-steer engines.

The DrivePILOT provides robust performance in heavier seas thanks to the included rate compass.

KEY FEATURES

AP44

- Optically bonded 4.1" color display with wide-viewing angle.
- Intuitive autopilot control with simple menu.
- Quick and easy rotary dial course adjustment.
- Automated turn patterns for hands-free maneuvers.
- No Drift steering holds course against wind and tide.

AP48

- Optically bonded 4.1" color display with wide-viewing angle.
- Intuitive autopilot interface with extended keypad.
- Large, heavy-duty rotary control dial for precision steering.
- Continuum steering technology.

INSTRUMENTS



IS35

Easily visible day or night, the IS35 offers an interface to engine data, fuel efficiency, depth history and more. Connected by NMEA 2000®, the IS35 automatically detects and displays the most relevant information on a series of pre-set, customisable data pages.

KEY FEATURES

- Simple button-driven menus.
- Automatically displays data from NMEA 2000® engines and sensors.
- Monitor up to two engines per gauge.
- Stylish-low-profile design.
- Single-cable installation.



IS42 / IS42J

The multi-purpose IS42 instrument display uses a 4.1-inch full-colour screen to clearly present data from a wide variety of NMEA 2000® connected sensors and engines. The IS42J offers engine status and performance for up to two J1939 diesel engines.

KEY FEATURES

- Optically bonded display with wide viewing angle and low-profile glass bridge design.
- Display wind, speed, depth, engine data, AIS and more.
- Intuitive operation with waterproof silicon keys.
- Add an OP12 keypad for full Simrad® autopilot control.



OP12

The OP12 wired remote seamlessly integrates with Simrad® autopilot systems to provide intuitive mode control, course adjustments, and power steering. Pairs with the IS42, and compatible with Simrad® multifunction displays.

KEY FEATURES

- Full autopilot control with the IS42.
- Waterproof silicon keys.
- Easy one-cable installation.



Precision-9

Based on reliable solid-state sensor technology, the Precision-9 Compass supplies heading and rate-of-turn information to Simrad® autopilot, radar and navigation systems.

KEY FEATURES

- Continual automatic calibration.
- Heading, Rate Of Turn (ROT), pitch and roll output over NMEA 2000®.
- Easily adjustable mounting bracket allows bulkhead or up-mast installation.



WR10

Take control of your autopilot from anywhere on board with this easy to use, pocket size, wireless remote controller. The WR10 works with Simrad® autopilot systems and is a perfect add on for all types of motor and fishing boats.

KEY FEATURES

- 1 or 10 degree course changes.
- Waterproof Bluetooth® base station.
- Range of up to 30 metres.



OP50

Available in portrait and landscape versions to suit any mounting location from dash to helm chair arm, this controller provides intuitive keypad and rotary-dial command of up to six displays.

KEY FEATURES

- Compatible with compatible with GO™, NSS™ and NSO™ multifunction displays range.
- High-quality aluminium control dial with built-in cursor functions.
- Available in portrait or landscape orientation.

AUTOPILOTS

BUILD YOUR AUTOPILOT SYSTEM

AP44 autopilot controller
Set your heading and access advanced pilot modes with the intuitive AP44 Autopilot Controller.



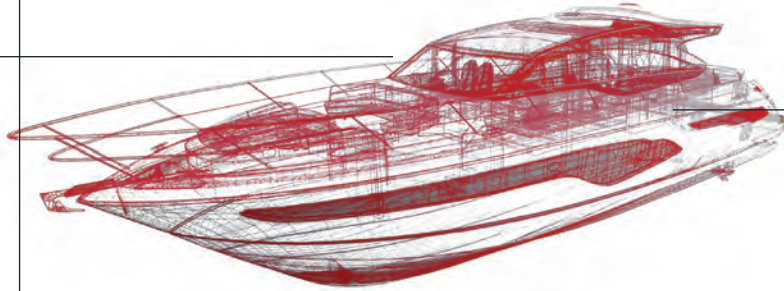
Precision-9 Compass
Solid-state compass with heading, rate of turn, pitch and roll output.



WR10 Wireless Remote
Autopilot control anywhere on board.



NSSevo35™
Control Simrad® autopilot, sonar, radar, and other accessories.



NAC™ -D Digital Steering Autopilot
NAC -D is a steer-by-wire autopilot solution for Electronic Vessel Control Systems (steering systems with a digital interface).



NAC™-2 Autopilot Computer
Autopilot computer for low-current drive units, suitable for vessels up to 10 metres/35 feet in length.



Pump-2 Drive Unit
A reversible hydraulic steering pump that works in conjunction with the NAC-2.



Rudder Feedback Unit
Contributes towards smooth and accurate auto-steering by determining rudder angle.

SUMMARY

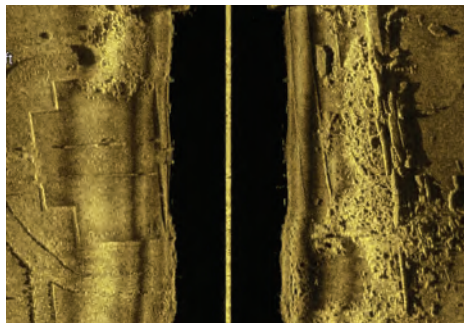
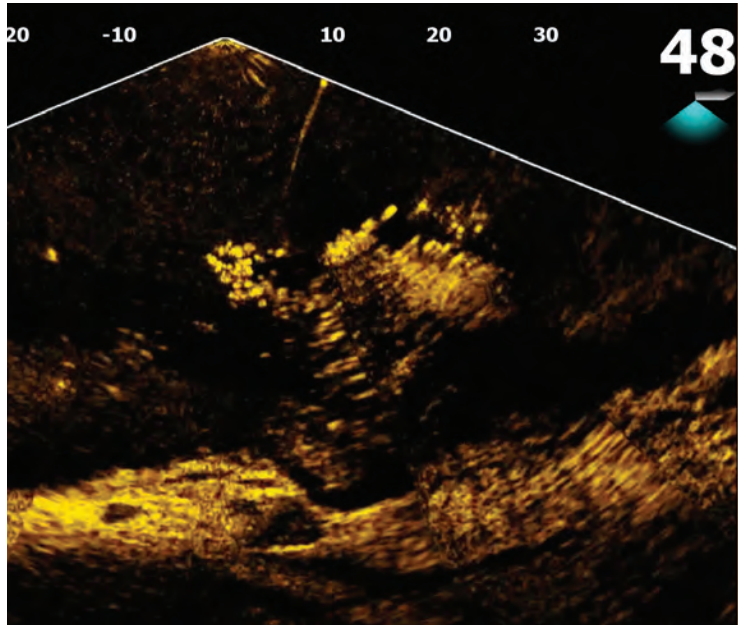
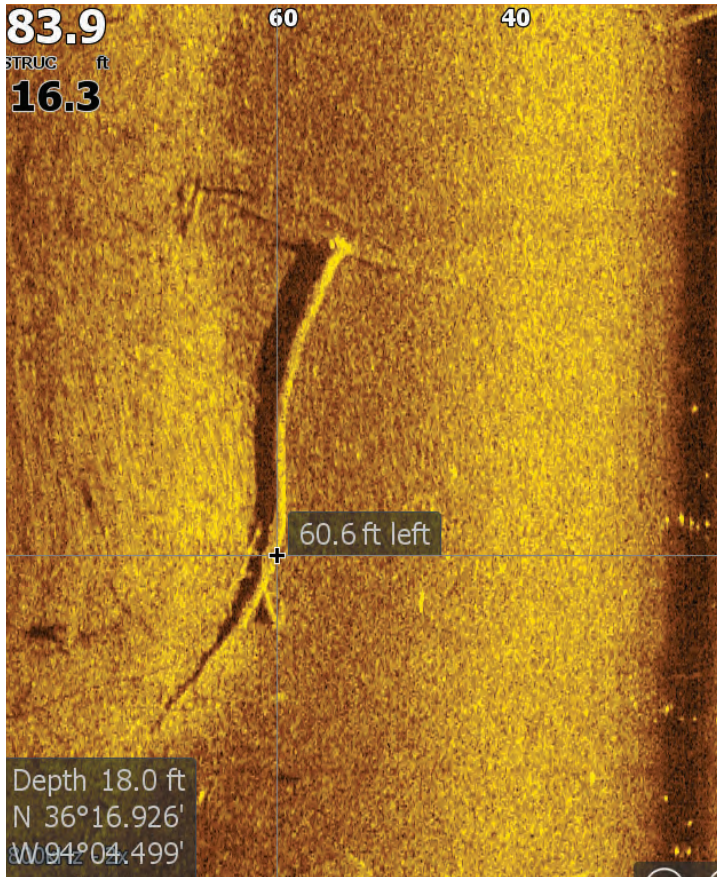
An autopilot system comprises various components, but when approached in the correct sequence, it becomes a straightforward process. The type of steering system on your boat often streamlines many of the decisions for you. Begin by familiarizing yourself with the type of steering system in your setup. Next, navigate through the process of choosing the appropriate drive system.

This step will ultimately guide you in selecting the correct computer and determining whether a rudder feedback unit is necessary.

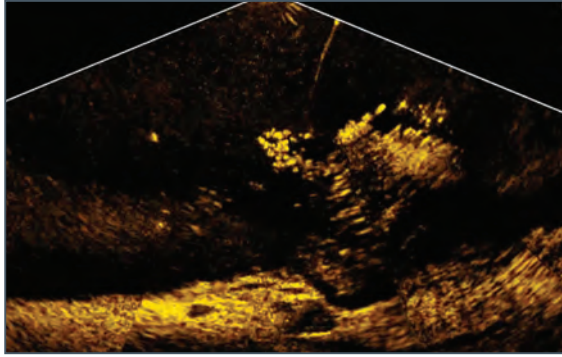
Finally, conclude by choosing the controller and any supplementary accessories that might be required.

	Simrad® Pilot Heads				Simrad® Remotes				Simrad® Pilot MFD's										Remotes	
	AP24	AP28	AP44	AP48	OP10	OP12	QS80, FU80, NFU80	NSE	NSS	NSO	GO Series	NSS evo2	NSS evo3	NSS evo3S	NSO evo2	NSO evo3	NSO evo3S	NSX	WR10	
Pilot Computers	AC12	✓	✓	✓	✓	✓	✓	✓	✓	✓	✓	✓	✓	✓	✓	✓	✓	✓	✓	✓
	AC42	✓	✓	✓	✓	✓	✓	✓	✓	✓	✓	✓	✓	✓	✓	✓	✓	✓	✓	✓
	NAC-1	✗	✗	✗	✗	✗	✗	✗	✗	✗	✓	✓	✓	✓	✓	✓	✓	✓	✓	✓
	NAC-2	✗	✗	✓	✓	✗	✓	✗	✗	✗	✓	✓	✓	✓	✓	✓	✓	✓	✓	✓
	NAC-3	✗	✗	✓	✓	✗	✓	✗	✗	✗	✓	✓	✓	✓	✓	✓	✓	✓	✓	✓
	NAC -D	✗	✗	✓	✓	✗	✓	✗	✗	✗	✓	✓	✓	✓	✓	✓	✓	✓	✓	✓
	SG05	✓	✓	✓	✓	✗	✓	✓	✓	✓	✓	✓	✓	✓	✓	✓	✓	✓	✓	✓

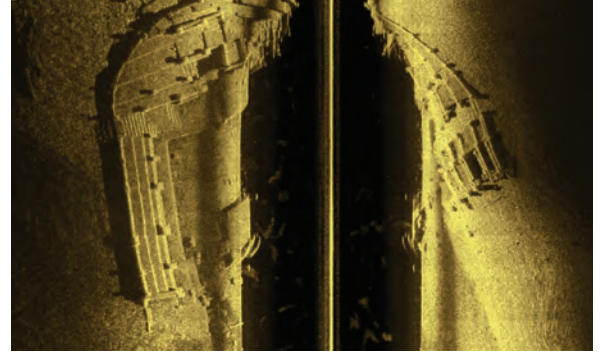
SONAR & TRANSDUCERS



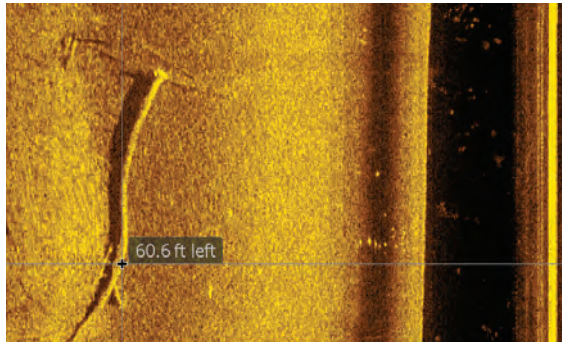
TRANSDUCERS AND MODULES



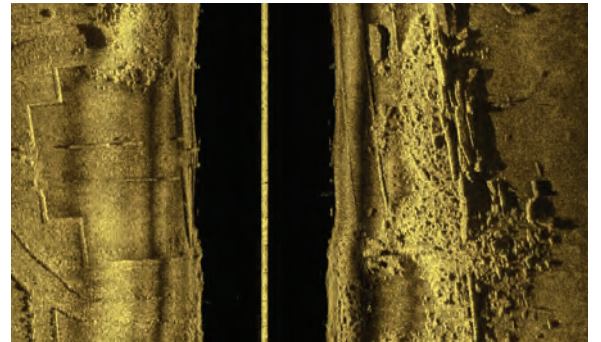
ActiveTarget™ See fish move through the water and around structure in real time.



Our clearest, sharpest sonar image ever without sacrificing any range.



Quickly identify fish-holding structure like rocks, reef, weedbeds and wrecks.



Active Imaging doesn't sacrifice range for image clarity, allowing you to find the structure faster.

SUMMARY

Sonar is a game-changing tool for all anglers – from weekend warriors to seasoned sportfishing enthusiasts. Transducers provide valuable underwater views that help anglers identify the best fishing spots, identify targets, and even make the final adjustments needed to bring fish onboard.

Our full range of transducers and sonar modules provide a range of tools to help turn your vessel into the fishing machine you want it to be. Select your components based on the waters you fish in, and the species you're looking for.

ActiveTarget™ Live Sonar

It's all in the name – ActiveTarget live sonar brings high-resolution images of fish responding to your lure, in near real time, so you can make guesswork a thing of the past.

With Forward, Down and Scout views, ActiveTarget scans live images all around your boat, tracking the movement of fish instantly so you can make quick adjustments to your line and make them strike.

Active Imaging™ SONAR

Active Imaging sonar is perfect for pinpointing fish-holding area like rocks, reef, weedbeds and wrecks.

Active Imaging delivers superior quality and the highest resolution images of fish and structure at a longer range than any other structure imaging technology.

KEY FEATURES

ActiveTarget Live Sonar

Forward, Down, and Scout views.

High-resolution images.

Watch fish respond in real time.

Active Imaging SONAR

CHIRP, SideScan and DownScan in a single transducer.

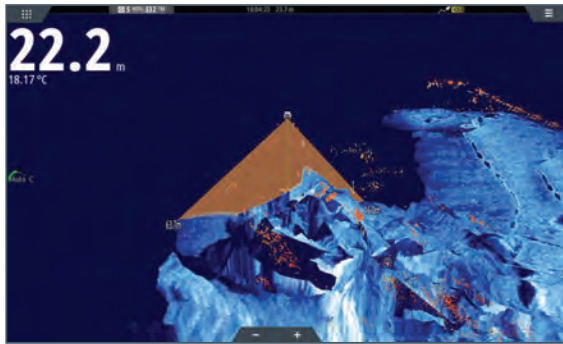
Easier target identification with FishReveal™.

Supports Medium and High CHIRP (83/200kHz) + SideScan and DownScan (455/800kHz).

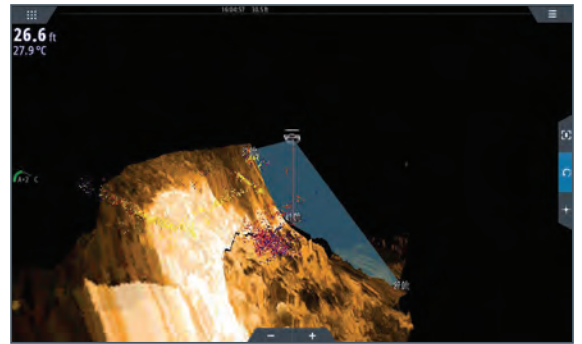
STRUCTURESCAN® 3D



S2009



StructureScan® 3D showing fish-holding around rocky structure near Nelson, New Zealand. Use Vertical Enhancement to make smaller structure appear larger and more visible.



StructureScan® 3D's ScanTrack view showing two distinct fish groups of varying species or size holding at different depth contours against this drop off.

SUMMARY

The StructureScan® 3D module works with any of our StructureScan 3D transducers to create a high resolution, three dimensional view beneath the surface. Immediately see where fish and structure are located in relation to your boat, with a picture-like view you can easily pan, tilt, and rotate for the perfect perspective.

Explore Fish-Holding Structure in 3D

StructureScan 3D takes the guesswork out of interpreting bottom details, letting you see underwater terrain and fish-holding structure as it really is.

Easy Upgrade or New Install

The StructureScan 3D module offers plug-and-play connection to compatible transducers (*sold separately*), and to any compatible Simrad multifunction display. Three built-in Ethernet ports make it easy to share sonar capabilities across multiple displays, or to connect other networked accessories.

Super-Wide, High Definition Scanning

The StructureScan 3D module and transducer offer super-wide SideScan sonar coverage, reaching up to 180 metres (*600 feet*) to each side of your boat. High-definition scanning delivers detailed 3D imagery, plus enhanced performance in classic SideScan and DownScan Imaging™ views.

KEY FEATURES

Unrivaled SideScan clarity.
High-definition and super-wide 3D scans.
Leading Edge Scanning Reference.
SelectScan target identification.

Vertical Enhancement Control and Waypoint Overlay.
ScanTrack™ pan-tilt-rotate controls.
Enhanced SideScan skimmer transducer design.

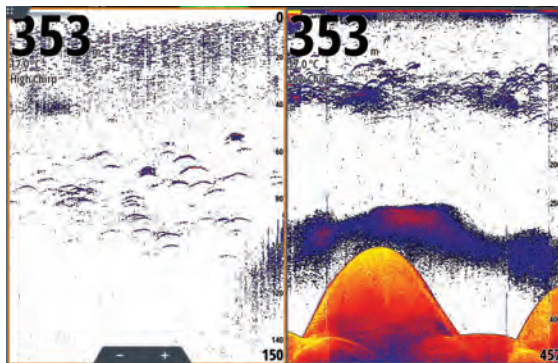
**S3100 AND S5100
SONAR MODULE**



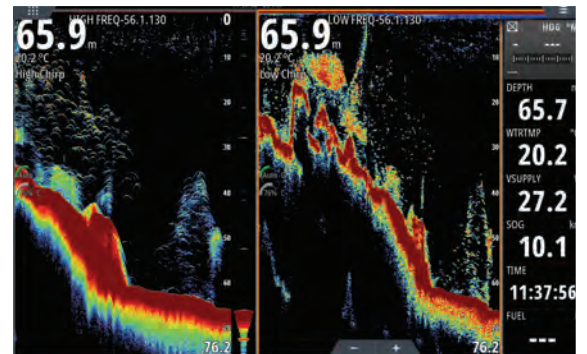
S3100



S5100



Pinnacles from 420m up to 300m on low frequency. Large bait school and individual fish in the mid water on both frequencies.



Reef Fishing at 65M (210ft). Different ping speed between high and low chirp.

SUMMARY

S3100 sonar

The compact S3100 sonar module takes your fishing to the next level, with a wealth of powerful fishing features packed into one small but intelligent box.

The S3100 brings Active Imaging™ HD to NSX®, NSS™ and NSO™ Evo™3S displays. Experience superior underwater clarity and a FishReveal™ view on SideScan*, so you'll never miss another fish.

S5100 sonar

Aimed at serious sportfishing enthusiasts, the S5100 is ideal for fishing in deeper waters. With three fully independent channels, the S5100 delivers simultaneous high-resolution coverage across multiple depth ranges.

Mix and match wide and narrow transducer beam-widths to reveal more fish, or adjust CHIRP frequencies to target specific depths, producing big, crisp arches for the most advanced target separation available.

KEY FEATURES

S3100 sonar

- 2x fully independent 1kW sonar channels.
- Unlocks Active Imaging HD on select Simrad® displays.
- Introduces FishReveal on SideScan*.
- Made from recycled plastics.
- Combine any 2 CHIRP frequency ranges to target multiple depths.
- Fish depths up to 900m/3,000ft*.

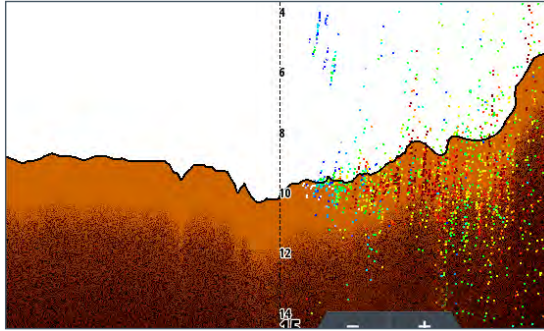
*Compatible transducer required

S5100 sonar

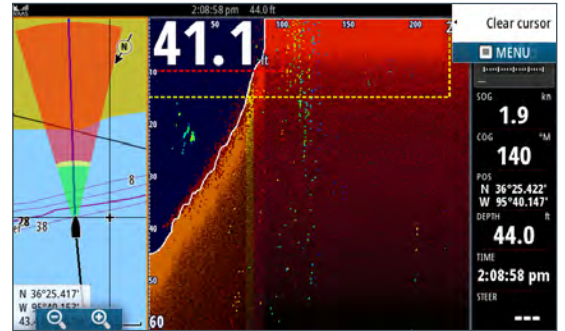
- 3x fully independent 3kW sonar channels.
- Combine any 3 CHIRP frequency ranges to target multiple depths.
- Noise-free, high-resolution images at all depth ranges.
- Dependable bottom-lock for high-speed vessels.
- Fish depths up to 3,000m/10,000ft (with compatible transducer).
- Plug and play 9-pin connectors for easy installation.

SONAR & TRANSDUCERS

FORWARDSCAN® SONAR



Bottom Colour Tracking offers a solid 2D rendering of the bottom ahead of your vessel for an uncluttered, immediately understandable view.



Heading Line View integrates ForwardScan depth data with the heading line on the navigation page of your Simrad® display, with simple colour-coding to represent deep, medium and shallow water.

SUMMARY

This forward-looking sonar provides a clear, two-dimensional image of the bottom in front of your vessel.

With a real-time view spanning up to 8x your current depth, ForwardScan allows you to navigate shallow or poorly-charted waters with confidence.

KEY FEATURES

Custom warning zones.
Shallow depth alarm.
Built-in temperature sensor.

Easy to install.
Bottom Color Tracking for simplified view.

8X MAXIMUM FORWARD VIEW
OF 8X YOUR CURRENT DEPTH
e.g. at 3m (10ft) depth, see up to 24m.

4X NOMINAL FORWARD VIEW
OF 4-5X YOUR CURRENT DEPTH
e.g. at 3m (10ft) depth, see 12-15m
(40-50ft) ahead.



**CHIRP AND
BROADBAND TRANSDUCERS**

For compatibility please see www.simrad-yachting.com or speak to one of our certified dealers.

Transom Mount	Tilt °	Freq (kHz)	Power	Cone angle °	Connector	Part Number
Active Imaging 3-IN-1		83/200/M/H		52°/22°	9pin xSonic	000-14489-001
HDI SKIMMER		83/200/M/H		52°/22°	9pin xSonic	000-12728-001
HDI SKIMMER		50/200/L/H		29°/12°	9pin xSonic	000-12569-001
TM150M		M (95-155)	300W	17°-26°	9pin xSonic	000-13944-001
P66		50/200	600W	45°/11°	9pin xSonic	000-13919-001
TM165HW		Hi (150-250 KHZ)	600W	30°	9pin xSonic	000-15482-001
TM185HW		Hi (150-250)	1kW	25°	9pin xSonic	000-13997-001
TM185M		M (85-135)	1kW	16°-11°	9pin xSonic	000-13998-001
TM260		50/200	1kW	19°/6°	9pin xSonic	000-13904-001
*TM275LH-W		L (42-65)/H(150-250)	1kW	16°-25°/25°	9pin xSonic	000-13770-001
Through Hull	Tilt °	Freq (kHz)	Power	Cone angle °	Connector	Part Number
Bronze HDI	0°	50/200/L/H		45°/11°	9pin xSonic	000-13905-001
	12°	50/200/L/H		45°/11°	9pin xSonic	000-13906-001
	20°	50/200/L/H		45°/11°	9pin xSonic	000-13907-001
B150M - 20°	20° (0° & 12° available)	M (95-155)	300W	17°-26°	9pin xSonic	000-13922-001
P319	0°	50/200	600W	45°/12°	9pin xSonic	000-13915-001
SS60 - 20°	20° (0° & 12° available)	50/200	600W	45°/12°	9pin xSonic	000-13786-001
SS75M - 20°	20° (0° & 12° available)	M (80-130)	600W	16°-24°	9pin xSonic	000-13910-001
SS75H	0°	H (130-210)	600W	9°-15°	9pin xSonic	000-13911-001
	12°	H (130-210)	600W	9°-15°	9pin xSonic	000-13912-001
SS260	20°	H (130-210)	600W	9°-15°	9pin xSonic	000-13913-001
SS260		50/200	1kW	19°/6°	9pin xSonic	000-13783-001
SS164 - 20°	20° (0° & 12° available)	50/200	1kW	20°/6°	9pin xSonic	000-13918-001
SS175L	0°	L (40-60)	1kW	21°-32°	9pin xSonic	000-13774-001
	12°	L (40-60)	1kW	21°-32°	9pin xSonic	000-13775-001
	20°	L (40-60)	1kW	21°-32°	9pin xSonic	000-13776-001
SS175M	0°	M (85-135)	1kW	11°-16°	9pin xSonic	000-13777-001
	12°	M (85-135)	1kW	11°-16°	9pin xSonic	000-13778-001
	20°	M (85-135)	1kW	11°-16°	9pin xSonic	000-13779-001
SS175H-W	0°	H (150-250)	1kW	25°	9pin xSonic	000-13780-001
	12°	H (150-250)	1kW	25°	9pin xSonic	000-13781-001
SS164 - 20°	20°	H (150-250)	1kW	25°	9pin xSonic	000-13782-001
*B275LH-W		L (42-65)/H(150-250)	1kW	16°-25°/25°	9pin xSonic	000-13771-001
*R509LH-W		LL (28-60)/H(150-250)	3kW	9°-23°/25°	9pin xSonic	000-13773-001
In Hull/Pocket/Chest Mount	Tilt °	Freq (kHz)	Power	Cone angle °	Connector	Part Number
P79		50/200	600W	45°/12°	9pin xSonic	000-13942-001
M260		50/200	1kW	19°/6°	9pin xSonic	000-13914-001
*CM275LH-W		L (42-65)/H(150-250)	1kW	16°-25°/25°	9pin xSonic	000-13772-001
Adaptors						Part Number
7 pin TXD plug to 9 pin MFD plug	For connecting 7 pin blue plug transducers to 9pin xSonic display					000-13313-001
9 pin TXD plug to 7 pin MFD plug	For connecting non Airmar XID transducers with 9pin xSonic connectors with analogue temp to older 7pin blue sockets on displays and sonar modules					000-12571-001
9 pin TXD plug to 7 pin MFD plug	For connecting XID Airmar Chirp transducer to older 7 pin blue socket on displays and sonar modules					000-13977-001

* These are dual channel transducers, connect to S5100, NSSevo3™ or NSSevo3S™.

RADIO / AIS

Hear and be heard with the latest equipment from Simrad®.

MARINE COMMUNICATIONS



RS20S

Stay safe and in touch with this dependable Class D DSC approved VHF radio featuring an integrated GPS receiver.

KEY FEATURES

- High-visibility display with inverted night mode.
- Intuitive rotary dial and keypad controls.
- Four-button fist microphone.
- Class D DSC approved.
- Integrated GPS antenna.



RS40

Stay safe and connected with this VHF marine radio featuring a sleek design with removable fist mic, Class D DSC functionality, and built-in GPS.

KEY FEATURES

- Class D DSC approved VHF radio.
- Dual channel AIS receiver.
- Integrated GPS receiver.
- Connect up to two wireless handsets.



RS40-B

The RS40-B includes a Class B AIS transceiver, which not only receives AIS targets but also transmits your boat's position to nearby AIS-equipped vessels.

KEY FEATURES

- Integrated Class B AIS transceiver.
- Class D DSC approved VHF radio.
- Integrated GPS receiver.
- Removable fist mic supports front or rear connection.
- Connect up to two wireless handsets.
- NMEA 0183 and NMEA 2000® connectivity.



V3100

V3100 offers the next level in AIS performance. This Class B-SO AIS transceiver transmits at 2.5x the power of a regular Class B AIS. The time between transmissions also changes depending on your boat speed.

KEY FEATURES

- Class B-SO approved AIS transceiver.
- 5W transmit power.
- NMEA 2000®, 0183 connectivity.
- IPx7 waterproof.

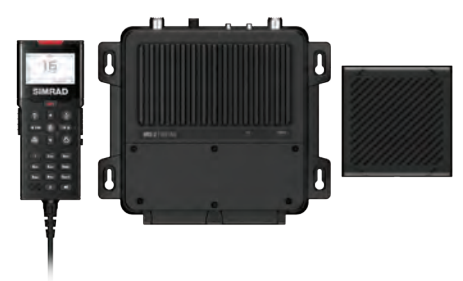


NAIS-500

Reduce your risk of collision with this fully integrated Class-B AIS transceiver – essential for navigating busy shipping lanes and congested ports. The NAIS-500 networks easily with any NSS™, NSO™ or GO™ display.

KEY FEATURES

- Class-B Approved AIS Transponder.
- Integrates with existing Simrad® MFD.
- NMEA 2000®, 0183 connectivity.
- IPx7 waterproof & low power consumption.

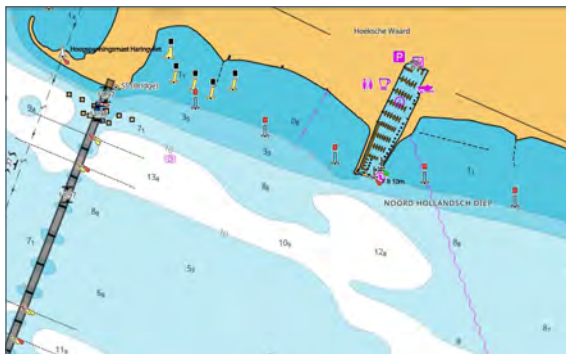


RS100/RS100-B

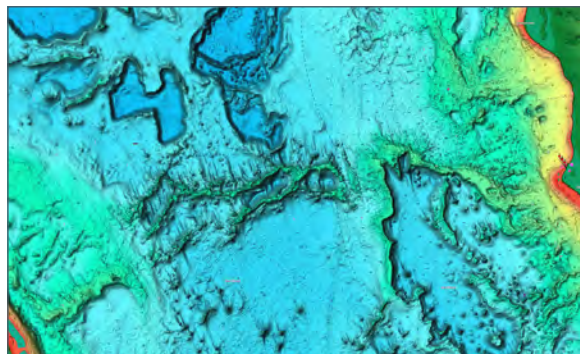
Not just a radio, the RS100 also functions as a hailer, foghorn, and on-board intercom. Connect up to 4 wired handsets and 4 wireless handsets for access anywhere on board. The RS100-B includes all the features of the RS100 but with the addition of a Class B AIS transceiver.

KEY FEATURES

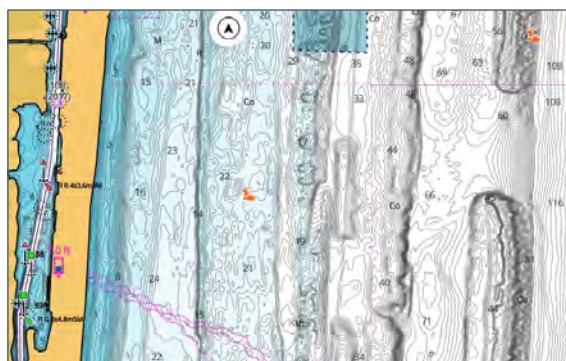
- Modular system with up to 4 wired and 4 wireless handsets.
- 60 seconds record and replay.
- Class B AIS transmitter and receiver (RS100-B only).



C-MAP DISCOVER™ X - Vector Chart



C-MAP REVEAL™ X - Shaded Relief



C-MAP DISCOVER™ X - High Res Bathymetry



C-MAP REVEAL™ X - Satellite Overlay

SUMMARY

DISCOVER X

C-MAP's X-Gen charts are designed for the next generation of chartplotters. With a dynamic new presentation to ensure you always have an uncluttered view and updates to some familiar features.

Along with all the chart data and navigational tools you could need, DISCOVER X introduces Map Inspector, showing detailed chart information with a touch of the screen. Night Mode ensures you always see the detail you need, whatever the time and whatever the weather.

New Safety Alerts take your vessel details, course and chart data to deliver an early warning if you are on a collision or grounding course. And – in an industry first – the X-Chart Manager lets you manage C-MAP chart updates and upgrades directly from your device, with the ability to choose custom areas for a near-instant download. The perfect way to enjoy your 12 months of free chart updates.

REVEAL X

REVEAL X brings two additional rich layers to the chart detail and features found in DISCOVER X.

The REVEAL shaded relief layer gives a realistic view of the structures beneath your boat, showing detail which could be missed when looking at the contour lines alone. It's been called a “game-changer” by anglers and is a great tool for divers. In areas with ultra-high resolution surveys, shipwreck structures are clearly shown.

REVEAL X truly is the ultimate chart, with tools designed to help you make the most of your time on the water, to keep you safe and deliver a beautiful, immersive navigation experience.

SUMMARY

DISCOVER

DISCOVER includes all the content and features you need for a day on the water or a week-long adventure. Vector charts from official HO sources are enhanced with additional data from thousands of surveys, along with high-res bathymetry layer with 1-foot contours and quality-controlled Genesis® social maps.

Customize your charts by inputting your boat details, helping autorouting plot the shortest, safest routes for you. Benefit from Custom Depth Shading, letting you understand the surrounding geography at a glance. And, with 12 months of free chart updates, you can be sure your data is the very latest available.

REVEAL

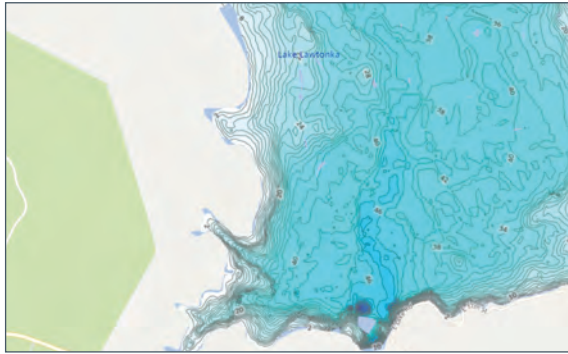
REVEAL charts bring two additional rich layers to the chart detail and features found in DISCOVER.

The upgrade to REVEAL is a must for anglers or divers, as the shaded relief layer brings the sea or lake floor to life in a photo-realistic view, revealing structures that might be easy to miss when interpreting contour lines alone. In areas with ultra-high-resolution surveys, you can even see the skeletal structure of shipwrecks.

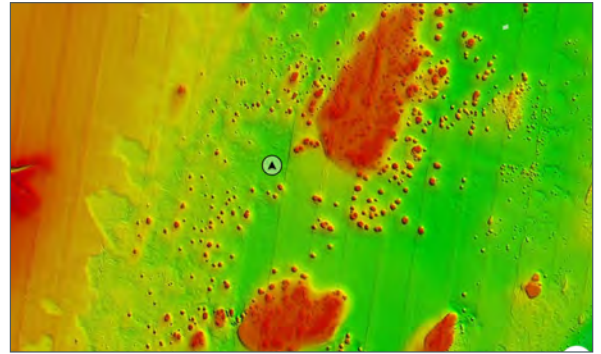
But REVEAL isn't just functional, it delivers a beautiful, immersive navigation experience designed to enhance your time on the water.

For a full list of features for C-MAP charts please visit c-map.com

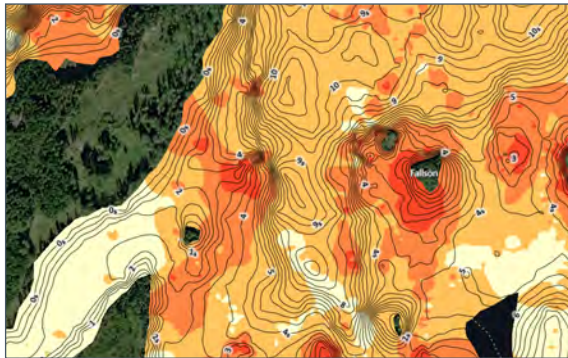
CARTOGRAPHY



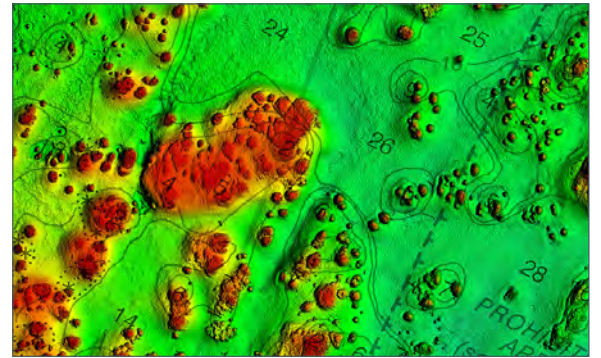
C-MAP GENESIS®



CMOR Mapping



Genesis Composition Map



StrikeLines

SUMMARY

C-MAP GENESIS

C-MAP GENESIS charts have revolutionized salt- and freshwater fishing by empowering you to create your own high-definition, custom fishing maps with amazing detail, down to 1-foot contours. Genesis Social Maps allows you to create your own maps, contributing to the Genesis community, and download thousands of community maps – all for free.

Genesis Social Maps are compatible with Simrad GO, NSSEVO3S and NSOEVO3S, and will be coming soon to NSX and NSX ULTRAWIDE. Find out more at genesismaps.com.

Additional Chart Options

For total flexibility Simrad® chartplotters are also available with a range of other charting options.

Check your individual display model for information on compatible charts below.

COMPATIBILITY

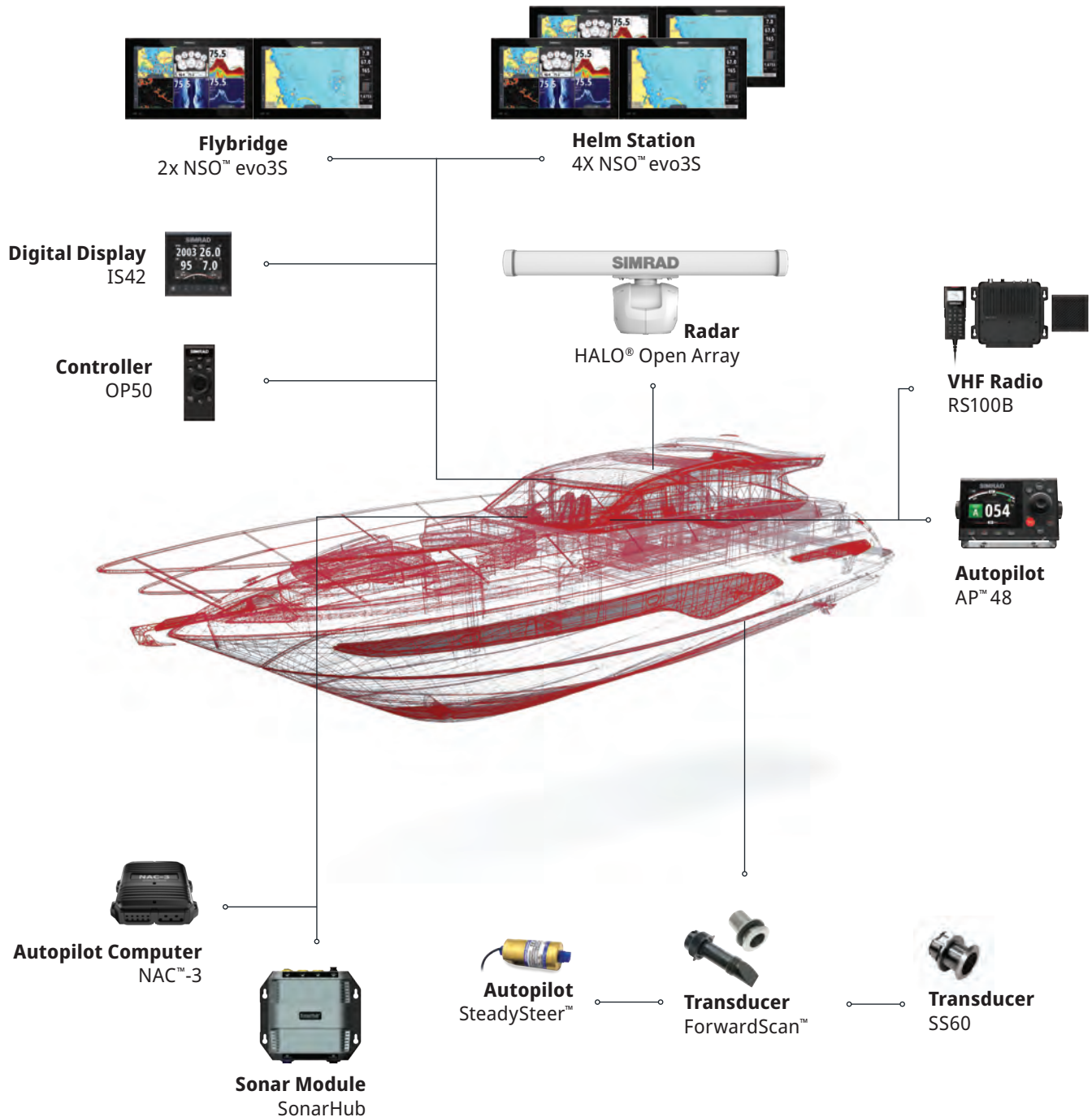
					COMPATIBILITY								
	Chart Included?	Bundled SD Chart Chip	Embedded Chart	Chart Included	C-MAP DISCOVER	C-MAP REVEAL	C-MAP DISCOVER X	C-MAP REVEAL X	Navionics	CMOR	StrikeLines	FMT	Standard Mapping
NSOEVO3S™	✓		✓	US Coastal Embedded	✓	✓			✓	✓	✓	✓	✓
NSSEVO3S™	✓		✓	US Enhanced Embedded	✓	✓			✓	✓	✓	✓	✓
NSX	✓	✓		C-MAP DISCOVER™ X North America			✓	✓		✓	**	**	**
NSX Ultrawide	✓	✓		C-MAP DISCOVER™ X North America			✓	✓		✓	**	**	**
GO™	✓	✓		C-MAP DISCOVER™ X North America	✓	✓			✓	✓	✓	✓	✓
CRUISE™	✓		✓	US Coastal Embedded	✓				✓				

** Coming in 2024

POWERBOAT SYSTEMS

40-70+ FT | Large Flybridge

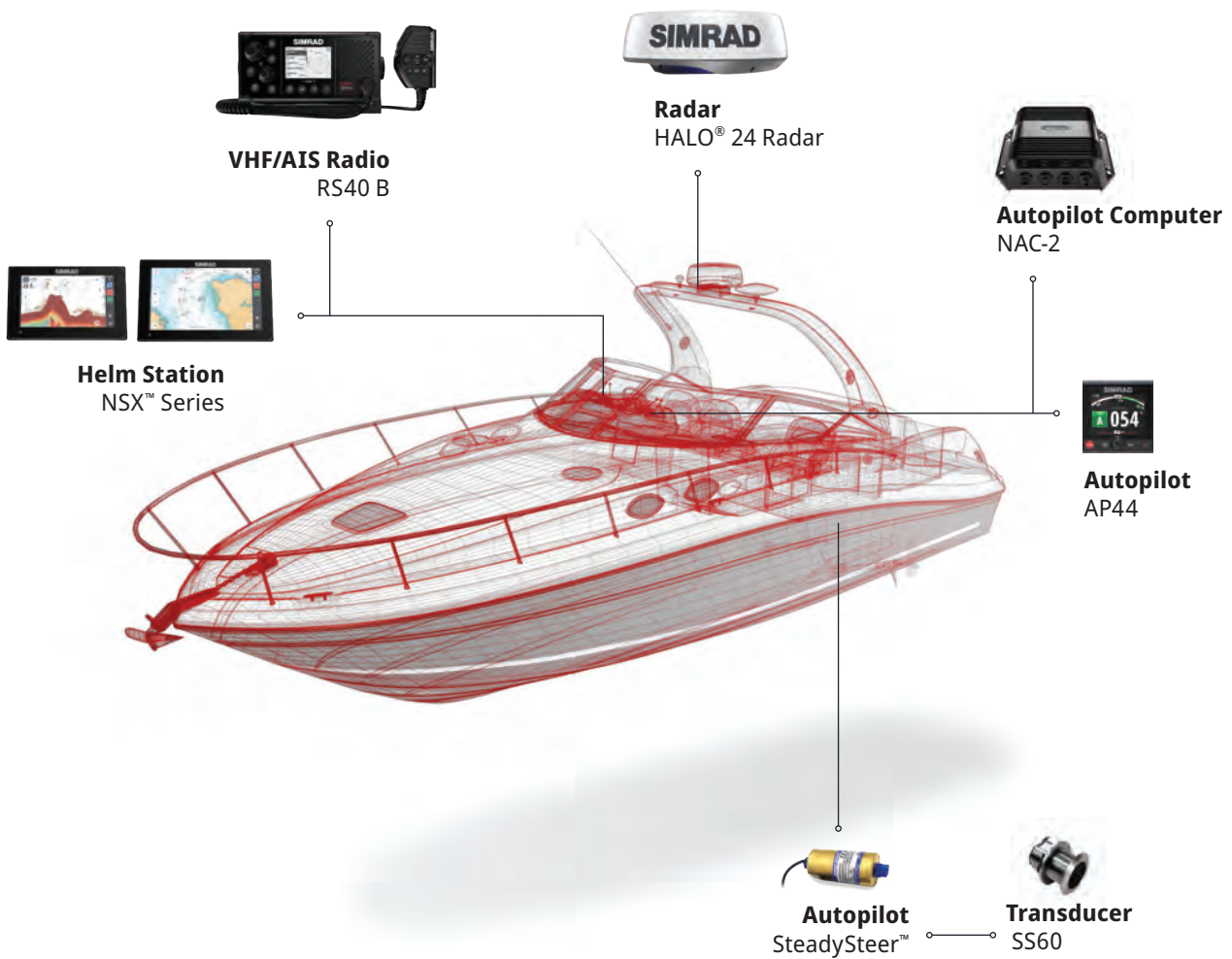
Large dual station motor yachts.



POWERBOAT SYSTEMS

Small & Medium Powerboats | 26-50 FT

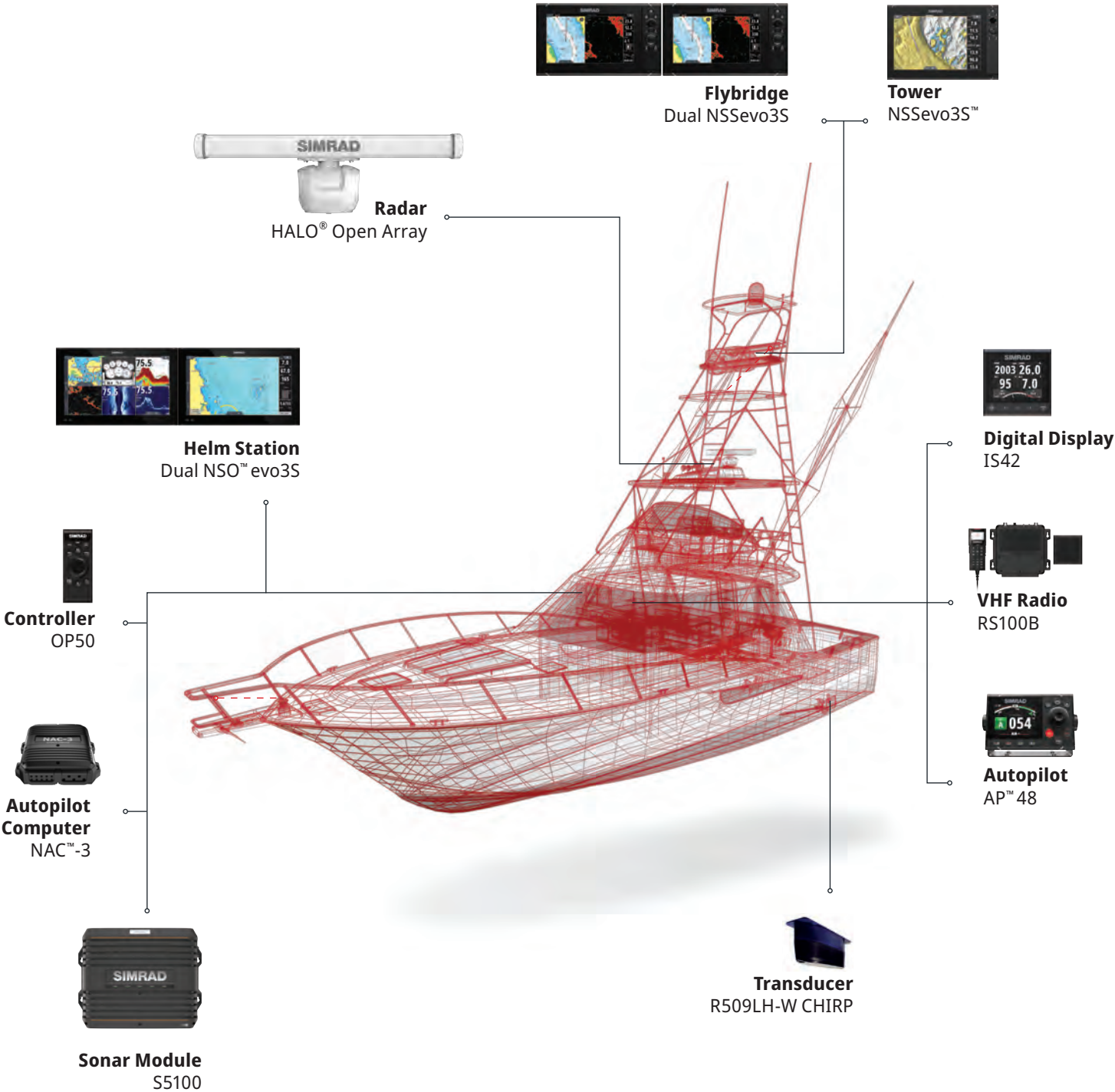
Single station powerboats.



SPORTFISHING SYSTEMS

40-70+ FT | Large Flybridge

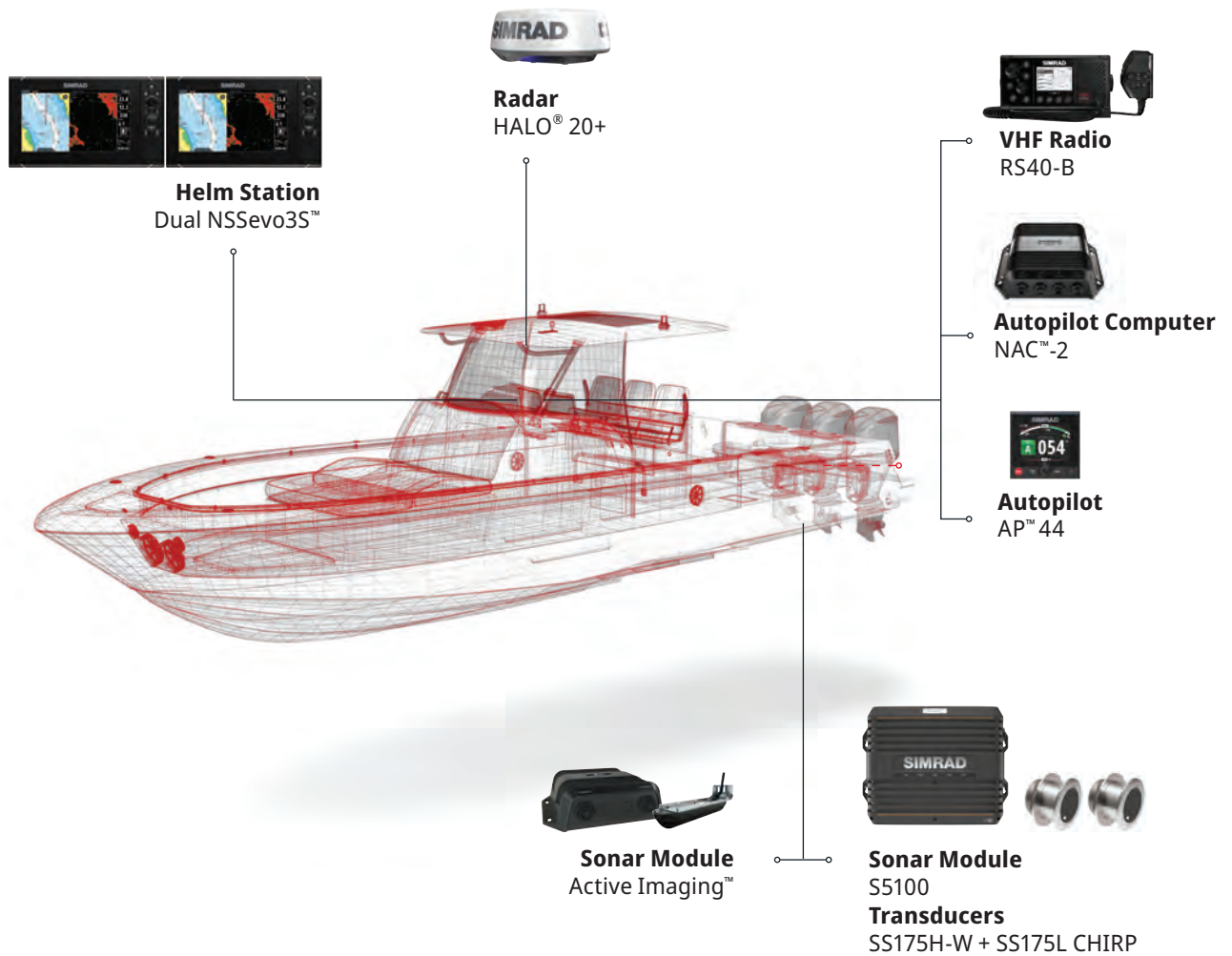
Large dual station motor yachts.



SPORTFISHING SYSTEMS

Centre Console | 20-40 FT

Single station sportfishers.



INTEGRATED VESSEL

CONNECTED DIGITAL BRIDGE



SUMMARY

When taking control of your boat, integration is everything. The ability to monitor and control all your on-board components in one place is a game-changer, making your time on the water easier and more enjoyable.

We start with the full suite of Simrad® electronics – integration radar, displays, autopilot, and more – and then go beyond, working closely with the world's leading third-party technical suppliers to become a pioneer in connectivity.

Our engine integration is category-leading. Experience unique tie-ins with Mercury® engines, and support for a full range of other leading brands, such as Honda and Suzuki®.

From digital switching to vessel-wide monitoring, our list of integration partners is always growing, making our systems more intelligent by the day.

Simrad® integration spans audio, digital switching, cameras, steering and propulsion, autopilot, power, stabilization, anchoring, and plenty more.

The possibilities are yours to define...

KEY PARTNERS

Engine

CAT, Cummins, Honda, MAN, Mercury, MTU, Suzuki, Yamaha and Yanmar.

Audio

Clarion, Fusion, Infinity, JL Audio Marine, Kicker, Poly-planar and Polk.

Digital Switching & Monitoring

CZONE and Dometic.

Camera & Night Vision

FLIR, IRIS and Omnisense.

Steering & Propulsion

Isotta.

Lighting

Lumishore, Lumitec, OceanLED and Shadow-Caster.

Power

Mastervolt, Victron Energy and Whisper Power.

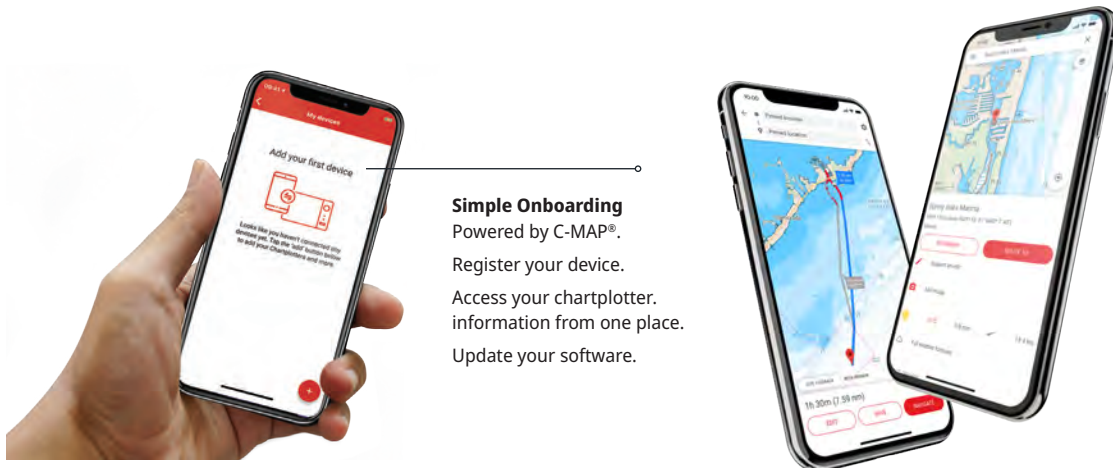
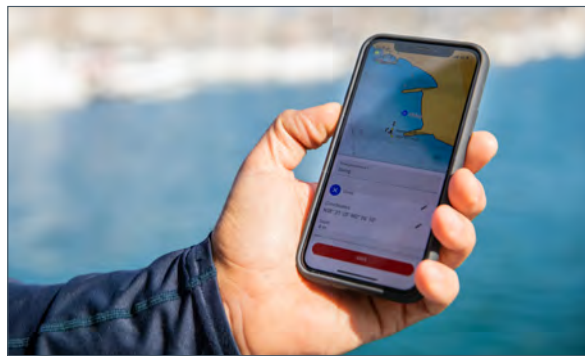
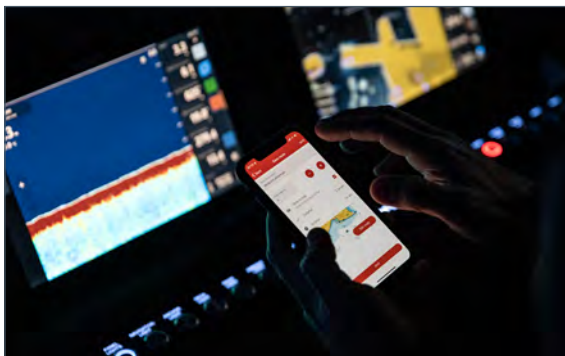
Stabilization

Quick Spa, Seakeeper and Smart GYRO.

Anchoring

Power-Pole.

SIMRAD® APP



Simple Onboarding
Powered by C-MAP®.
Register your device.
Access your chartplotter.
information from one place.
Update your software.

SUMMARY

The Simrad® App extends your enjoyment beyond the water, allowing you to take your boating home with you. Explore detailed C-MAP charts, plan routes, and re-live your adventures from anywhere.

Weather Updates

The Simrad® App provides access to the very latest C-MAP cartography, including high-res bathymetry, custom shading, and thousands of points of interest.

Dynamic C-MAP® Charts

The Simrad® App provides access to the very latest C-MAP cartography, including high-res bathymetry, custom shading, and thousands of points of interest.

Easy Syncing

Synchronize your planning data with your Simrad® display anytime, anywhere. The Simrad App allows you the freedom to save your waypoints, routes, and tracks – viewing on your Simrad® display, mobile device, or both at the same time.

KEY FEATURES

Free Features

- Up-to-date nautical charts.
- Personal waypoints, routes and tracks.
- Manual and Autorouting.
- Measure distance tool.
- Thousands of points of interest.
- Marine weather forecast.
- GPX import and export.
- Chart personalization.
- Device registration.
- Device support: manuals, guides, videos.
- Mirroring and Control.
- Offline sync of WRnT.

Premium Features

- Everything in FREE plus:*
- Offline maps (*Global chart*).
- AIS.
- 5-day weather along the route.
- Navigation:** GPS data, navigation line, track record.
- Traffic:** keep an eye on other app users around.
- 5-day weather overlay.
- High-resolution Bathymetry.
- Custom Depth Shading.
- Shaded Relief.

PART NUMBERS

Simrad® Product List

A quick resource to help you find the correct Simrad® parts.

NSO EVO3S MFD

DESCRIPTION	PART NO.
NSO EVO3S MFD 16" Display	000-15047-001
NSO EVO3S MFD 19" Display	000-15049-001
NSO EVO3S MFD 24" Display	000-15051-001
NSO EVO3S MFD 16" System Pack	000-15126-001
NSO EVO3S MFD 19" System Pack	000-15127-001
NSO EVO3S MFD 24" System Pack	000-15128-001

NSO EVO3S MPU

DESCRIPTION	PART NO.
NSO EVO3S MPU Only AMER	000-15100-001
NSO EVO3S MPU, 24" Monitor Bundle AMER	000-15118-001
NSO EVO3S MPU, 19" Monitor Bundle AMER	000-15116-001
NSO EVO3S MPU, 16" Monitor Bundle AMER	000-15114-001

NSS EVO3S

DESCRIPTION	PART NO.
NSS16 evo3S US C-MAP	000-15404-001
NSS12 evo3S US C-MAP	000-15403-002
NSS9 evo3S US C-MAP	000-15402-001
NSS12 evo3S US C-MAP, HALO20+ Bundle	000-15555-002
NSS9 evo3S US C-MAP, HALO20+ Bundle	000-15554-001

NSX

DESCRIPTION	PART NO.
NSX 3007 Active Imaging, AMER	000-15365-001
NSX 3007 Med/High HDI, AMER	000-15371-001
NSX 3007 No Transducer, AMER	000-15214-001
NSX 3009 Active Imaging, AMER	000-15366-001
NSX 3009 Med/High HDI, AMER	000-15372-001
NSX 3009 No Transducer, AMER	000-15218-001
NSX 3009 Active Imaging + HALO20+, AMER	000-15377-001

NSX

DESCRIPTION	PART NO.
NSX 3012 Active Imaging, AMER	000-15367-001
NSX 3012 No Transducer, AMER	000-15222-001
NSX 3012 Active Imaging + HALO20+, AMER	000-15378-001

GO SERIES

DESCRIPTION	PART NO.
GO7 XSR Active Imaging, C-MAP DISCOVER	0000-14838-002
GO7 XSR Med/High HDI, C-MAP DISCOVER	0000-14326-002
GO7 XSR No Transducer, C-MAP DISCOVER	000-14078-002
GO9 XSE Active Imaging, C-MAP DISCOVER	0000-14840-002
GO9 XSE Med/High HDI, C-MAP DISCOVER	0000-13211-002
GO9 XSE No Transducer, C-MAP DISCOVER	000-13210-002
GO9 XSE Active Imaging, HALO20+ Bundle	000-15617-002

CRUISE

DESCRIPTION	PART NO.
Cruise 5, US Coastal, 83/200 Transducer	000-14995-001
Cruise 7, US Coastal, 83/200 Transducer	000-14996-001
Cruise 9, US Coastal, 83/200 Transducer	000-14997-001

DEDICATED DISPLAYS

DESCRIPTION	PART NO.
R2009, Radar Control Unit, 9"	000-12186-001
R3016, Radar Control Unit, 16"	000-12188-001
S2009, Sonar, 9", No Transducer	000-12185-001
S2016, Sonar, 16", No Transducer	000-12187-001

SONAR

DESCRIPTION	PART NO.
SonarHub™ Module	000-11142-001
S5100 Sonar Module	000-13260-001

PART NUMBERS

Simrad® Product List

A quick resource to help you find the correct Simrad® parts.

SONAR

DESCRIPTION	PART NO.
ForwardScan Transducer (XDRCR kit)	000-11674-001
ForwardScan Transducer (No sleeve or plug)	000-11675-001
StructureScan3D transducer and module	000-12395-001
ActiveTarget Live Sonar	000-15593-001
StructureScan 3D Stainless Steel Thru-Hull transducer	000-13559-001
Active Imaging Transducer	000-14490-001
Active Imaging 3-IN-1 with 7.6 (25 foot) cable	000-14489-001
Active Imaging 3-IN-1 with 1.8m (6 Foot) cable	000-14814-001

HALO OPEN ARRAY

DESCRIPTION	PART NO.
HALO-3 Pulse Compression Radar	000-11469-001
HALO-4 Pulse Compression Radar	000-11470-001
HALO-6 Pulse Compression Radar	000-11471-001

HALO DOME RADAR

DESCRIPTION	PART NO.
HALO 24	000-14535-001
HALO 20+	000-14536-001
HALO 20	000-14537-001

VHF & AIS

DESCRIPTION	PART NO.
RS20S VHF	000-14491-001
RS40 VHF	000-14470-001
RS40B VHF	000-14473-001
NAIS-500 with GPS-500	000-13609-001
RS100 SYSTEM	000-15643-001
HANDSET+SPEAKER KIT,RS100,WIRED	000-15647-001

VHF & AIS

DESCRIPTION	PART NO.
RS100-B SYSTEM,AIS+GPS-500	000-15792-001
HANDSET,HS100,WIRED	000-15649-001
SPEAKER,SP100,WIRED	000-15651-001
VHF W/L HANDSET,DSC,HS40	000-14475-001
NSPL-500	000-13612-001

INSTRUMENTS

DESCRIPTION	PART NO.
IS35 Colour Instrument Display	000-13334-001
IS42 Digital Display	000-13285-001
Precision-9 Compass	000-12607-001

AUTOPILOT

DESCRIPTION	PART NO.
AP44 Rotary Pilot Head	000-13289-001
AP48 Rotary Pilot Head	000-13894-001
OP12 Autopilot Controller	000-13287-001
DrivePilot™ Hydraulic Steer Pack	000-11750-001
Outboard Pilot Hydraulic Pack	000-11748-001
Outboard Pilot Cable steer Pack	000-11749-001
OP50 Remote, Portrait	000-12364-001
WR10 Autopilot remote and base station	000-12316-001
SteadySteer™	000-15734-001

WEATHER/ENTERTAINMENT

DESCRIPTION	PART NO.
WM-4 SiriusXM Satellite Weather/Audio Receiver	000-14970-001

Ready to dive deeper?
Follow the QR code to see full
spec for all Simrad® products.



SIMRAD®

SIMRAD-YACHTING.COM

Find us on social media

Facebook

simradyachting

LinkedIn

simrad marine electronics

Instagram

simradyachting

YouTube

simrad yachting



**Visit our website for a list of
certified dealers**